

**PREVALENCE OF INTESTINAL HELMINTH INFECTIONS AMONG PREGNANT  
WOMEN ATTENDING ANTENATAL CLINICS AT THE KITALE DISTRICT  
HOSPITAL, KENYA**

**WEKESA ANTONY WANYONYI**

**A Thesis Submitted to the Graduate School in Partial Fulfilment for the Requirements of  
the Award of Master of Science Degree in Medical Parasitology  
of Egerton University**

**EGERTON UNIVERSITY**

**NOVEMBER, 2014**

## DECLARATION AND RECOMMENDATION

### DECLARATION

This thesis is my original work and has not been submitted or presented for examination in any institution.

Signature: \_\_\_\_\_

Date: \_\_\_\_\_

**Antony W. Wekesa**

**SM17/2792/10**

### RECOMMENDATION

This thesis has been submitted for examination with our approval as University Supervisors.

Signature: \_\_\_\_\_

Date: \_\_\_\_\_

**Prof. Inyagwa, C. Muleke**

**Associate Professor, Department of Veterinary Clinical Studies**

**Egerton University**

Signature: \_\_\_\_\_

Date: \_\_\_\_\_

**Prof. Rose O. Odhiambo,**

**Associate Professor, Department of Biological Sciences**

**Egerton University**

## **COPYRIGHT**

**© 2014 WEKESA ANTONY WANYONYI**

No part of this thesis may be reproduced, stored in any retrieval system, or transmitted in any form or by any means; electronic, mechanical, photocopying, or recording or by any information storage or retrieval system without prior written permission of the author or Egerton University on that behalf. All rights reserved.

## **DEDICATION**

I dedicate this work to my beloved wife Lonah A Wekesa, my daughters Nambuye Patricia W, Nanjala Yvonne W., Nafula Sybil W., and son Matere Darius W.

## **ACKNOWLEDGEMENT**

My heartfelt thanks go to my supervisors Professor, C. I. Muleke and Professor Rose Odhiambo, of Egerton University for their valuable advice and close follow up during proposal writing and finally the thesis.

I would like to thank Egerton University lecturers who reviewed my work, to meet required threshold.

Dr. Wakwabubi and Dr. Kasembeli, of Kitale District Hospital are duly acknowledged for allowing me to conduct my research at the Hospital.

I would like to also thank Kitale District Hospital Laboratory staff and Division of Vector Borne and Neglected Tropical Diseases Kakamega staff for their moral support during my research period.

My sincere thanks go to the pregnant women at Kitale District Hospital whose participation made the study and findings possible.

Last but not least, my gratitude goes to Dr. Okware Opari, M.O.H, Kakamega central for his continued support in my studies.

## ABSTRACT

Intestinal helminth infections with parasites such as *Ascaris lumbricoides*, *Necator americanus*, *Ancylostoma duodenale* and *Trichuris trichiura*, during pregnancy are associated with adverse outcomes including, poor nutritional status, growth, low birth weight and perinatal mortality. They present major public health problem in developing countries, but the prevalence, intensity and predisposing factors are not adequately documented in many areas of Kenya. The purpose of this study was to determine the prevalence of intestinal helminth infection, their association with maternal haemoglobin levels, and Socio economic factors that predispose pregnant women, to the infection. A hospital based survey was carried out for four months of 2012. A total of 153 pregnant women participated in the study. Stool samples were examined using Kato Katz technique. For each stool sample two Kato slides were prepared and average of the total number of eggs calculated. Haemoglobin levels and eosinophil count were measured using the Coulter counter machine. Socio economic factors that predispose pregnant women to intestinal helminth infection were assessed using a semi structured questionnaire. Data was analyzed using SPSS for windows version 16.0. Prevalence of intestinal helminths was analysed using descriptive statistics. Chi-square was used to analyze the association of intestinal helminths infection and maternal haemoglobin level. Bivariate analysis was used to identify socio-economic factors that predispose pregnant women to intestinal helminth infection. Level of statistical significance was chosen at 5% in this study. The overall prevalence of intestinal helminth infection was 21(13.8%). *Ascaris lumbricoides* was most prevalent parasite 10 (6.5%), *Necator americanus* 6 (3.9%), *Trichuris trichiura* 2 (1.3%), *Enterobius vermicularis* 1(0.7%), *A.lumbricoides* and *T.trichiura* 2(1.3%). A significant negative association was observed between heavy infection of *Necator americanus* and low maternal haemoglobin level (P-value 0.013). Pregnant women aged below 29 years had a higher risk of helminth infection (P=0.08) as compared to their older counter parts. Living in permanent house had lesser likelihood of getting helminth infection as compared to those living in semi permanent house (P=0.001). Use of flush toilets had lesser chances of getting helminth infection as compared to pit latrines (P=0.047). The study findings suggested that intestinal helminth infection is prevalent among pregnant women at the Kitale District Hospital. These findings reinforce the need to create public health awareness and screening of all pregnant women for intestinal helminths as part of their routine antenatal care.

## TABLE OF CONTENTS

### TITLE PAGE

|   |            |
|---|------------|
| <b>DECLARATION AND RECOMMENDATION .....</b>                     | <b>ii</b>  |
| <b>COPYRIGHT .....</b>  | <b>iii</b> |
| <b>DEDICATION .....</b>   | <b>iv</b>  |
| <b>ACKNOWLEDGEMENT .....</b>                                    | <b>v</b>   |
| <b>ABSTRACT.....</b>  | <b>vi</b>  |
| <b>TABLE OF CONTENTS .....</b>                                  | <b>vii</b> |
| <b>LIST OF TABLES .....</b>                                     | <b>ix</b>  |
| <b>LIST OF PLATES .....</b>                                     | <b>x</b>   |
| <b>LIST OF ABBREVIATIONS AND ACRONYMS .....</b>                 | <b>xi</b>  |
| <br>  |            |
| <b>CHAPTER ONE .....</b>  | <b>1</b>   |
| <b>INTRODUCTION.....</b>  | <b>1</b>   |
| 1.1 Background Information.....                                 | 1          |
| 1.2 Statement of the Problem.....                               | 3          |
| 1.3 Objectives.....   | 3          |
| 1.3.1 General Objective.....                                    | 3          |
| 1.3.2 Specific objectives .....                                 | 3          |
| 1.4 Null Hypotheses .....                                       | 3          |
| 1.5 Justification .....   | 4          |
| <br>  |            |
| <b>CHAPTER TWO .....</b>  | <b>5</b>   |
| <b>LITERATURE REVIEW .....</b>                                  | <b>5</b>   |
| 2.1 Aetiology of intestinal helminth infections in humans ..... | 5          |
| 2.2 Life cycle of intestinal helminths .....                    | 7          |
| 2.3 Epidemiology of intestinal helminths.....                   | 10         |
| 2.4 Pathology of intestinal helminths .....                     | 11         |
| 2.4.1 Hookworm infection .....                                  | 11         |
| 2.4.2 Infection with <i>Trichuris trichiura</i> .....           | 12         |
| 2.4.3 Infection with <i>Ascaris lumbricoides</i> .....          | 13         |
| 2.5 Prevention and control of intestinal helminths. ....        | 13         |
| <br>  |            |
| <b>CHAPTER THREE .....</b>                                      | <b>15</b>  |
| <b>MATERIALS AND METHODS .....</b>                              | <b>15</b>  |
| 3.1 Study area .....  | 15         |
| 3.2 Study Design.....   | 16         |
| 3.3 Target Population .....                                     | 16         |
| 3.4 Sample size determination .....                             | 16         |
| 3.5 Data collection .....                                       | 17         |

|  |                                     |
|--|-------------------------------------|
| 3.5.1 Methodology: Objective 1 Prevalence and intensity of intestinal helminth infection .....                   | 17                                  |
| 3.5.2 Objective 2 Association between intestinal helminth infection and maternal haemoglobin level. ....         | 18                                  |
| 3.5.3 Objective 3: Socio-economic factors that predisposes pregnant women to intestinal helminth infection. .... | 19                                  |
| 3.6 Data analysis .....  | 19                                  |
| 3.7 Ethical Consideration .....  | 19                                  |
| <b>CHAPTER FOUR.....</b>   | <b>21</b>                           |
| <b>RESULTS AND DISCUSSION .....</b>  | <b>21</b>                           |
| 4.1 Results .....  | 21                                  |
| 4.1.1 Objective 1: : Prevalence of Intestinal Helminth Infection.....  | 21                                  |
| 4.1.2: Objective 2: Association between intestinal helminth infection and maternal Hb Levels .....               | 23                                  |
| 4.1.3 Objective 3: Socio-economic factors predisposing pregnant women to helminth infection. ....                | 25                                  |
| 4.2. Discussion.....   | <b>Error! Bookmark not defined.</b> |
| <b>CHAPTER FIVE.....</b>   | <b>35</b>                           |
| <b>CONCLUSION AND RECOMMENDATIONS.....</b>   | <b>35</b>                           |
| 5.1 Conclusion .....   | 35                                  |
| 5.2. Recommendations .....   | 35                                  |
| <b>REFERENCES.....</b>   | <b>37</b>                           |
| <b>APPENDICES.....</b>   | <b>44</b>                           |
| <b>APPENDIX A: INFORMED CONSENT.....</b>   | <b>44</b>                           |
| <b>APPENDIX B: QUESTIONNAIRE .....</b>   | <b>45</b>                           |
| <b>APPENDIX C: CONSENT LETTER .....</b>  | <b>47</b>                           |
| <b>APPENDIX D: ETHICS REVIEW APPROVAL.....</b>   | <b>48</b>                           |
| <b>APPENDIX E: PUBLICATIONS.....</b>   | <b>49</b>                           |



## LIST OF TABLES

|   |    |
|---|----|
| Table 1 : Prevalence of Intestinal Helminth Infection. ....                             | 21 |
| Table 2 : Association between intestinal helminth infection and maternal Hb Levels..... | 23 |
| Table 3: Peripheral blood film (Pbf) and eosinophil count of helminth infection.....    | 24 |
| Table 4 : Socio-economic factors predisposing pregnant women to helminth infection..... | 25 |

## LIST OF PLATES

|   |    |
|---|----|
| Plate 1: Life Cycle of <i>Ascaris lumbricoides</i> .....  | 7  |
| Plate 2 : Life cycle of (Hookworms) <i>Necator americanus</i> and <i>Anclostoma duodenale</i> ..... | 8  |
| Plate 3 : Life Cycle of <i>Trichuris trichiura</i> , also called the human whipworm.....            | 9  |
| Plate 4 : Location of the Kitale District Hospital, Kenya.....                                      | 15 |
| Plate 5: Photographs of the 3 helminth eggs .....   | 21 |
| Plate 6: Filariform larvae of <i>Necator americanus</i> . .....                                     | 22 |

## **LIST OF ABBREVIATIONS AND ACRONYMS**

|     |   |                           |
|-----|---|---------------------------|
| EPG | : | Eggs per Gram             |
| Hb  | : | Haemoglobin               |
| PBF | : | Peripheral Blood Film     |
| WBC | : | White Blood Cell          |
| MOH | : | Medical Officer of Health |
| WHO | : | World Health Organization |
| x10 | : | Ten Times Magnification   |
| x40 | : | Forty Times Magnification |

# CHAPTER ONE

## INTRODUCTION

### 1.1 Background Information

Intestinal helminths are among the most common and widespread of the human infections. They contribute to poor nutritional status, anaemia and impaired growth Dickson *et al.*, (2000). They are among neglected tropical diseases (Hotez *et al.*, 2007). About 2 billion harbour these infections worldwide, of which 300 million suffer associated severe morbidity. An estimate by WHO states that soil transmitted helminthiasis represented more than 40% of the disease burden due to all tropical diseases WHO (2003). Data from the early 1990s suggest that 44 million of the developing world's 124 million pregnant women harboured hookworm infection Huddle and Gibson, (1999). Numbers like this have led to an increased interest in the topic of hookworm-related anaemia during pregnancy (Gyorkos *et al.*, 2006)

The global burden by disability-adjusted-life year (DALY) of soil transmitted Helminthic diseases is comparable to tuberculosis and malaria (Jex *et al.*, 2011). Creeping impact of these parasitic infestations insidiously affects women and children's health, reduce work productivity of adults and thus, impair economic growth of poor countries WHO, (2012). Worm infestations cause anaemia and poor pregnancy outcome in women and, [www.ccsenet.org/gjhs](http://www.ccsenet.org/gjhs). Global Journal of Health Science Vol. 6, No. 3; 2014 10malnutrition, poor physical growth, and psychological cognitive underdevelopment in children (Yap *et al.*, 2012). Those impacts are often less visible and usually have a low priority.

Intestinal helminthiasis are among neglected tropical diseases which primarily affect low-income populations, causing chronic conditions, learning disabilities, and reduced productivity and income earning capacity in later life. Morbidity control and, where resources allow, local elimination are now recognized as a priority for achieving the millennium development goals (Hotez *et al.*, 2008).

The high rates of helminths infection among pregnant women are mostly indicative of faecal pollution of soil and domestic water supply around homes, due to poor sanitation and improper sewage disposal (Van Eijk *et al.*, 2009; Bundy *et al.*, 1995;). Pregnant women are at high risk of infection because of their close relationship with children (Van Eijk *et al.*, (2009; Bundy *et al.*,

1995). Intestinal helminths are transmitted through the soil. The practice of soil-eating (geophagy) is common amongst pregnant women in many communities in developing countries (Brooker *et al.*, 2008).

Globally, the most common cause of low haemoglobin is believed to be iron deficiency, probably due to helminths infection and inadequate dietary iron intake, physiologic demands of pregnancy and rapid growth Ayoya *et al.*, (2006); Dreyfuss *et al.*, (2000). The prevalence of helminth infection is especially high in developing countries, particularly among populations with poor environmental sanitation Van Eijk *et al.*, (2009). Other practices such as improper disposal of refuse, personal hygiene, and walking bare foot may contribute to infection (Stoltzfus *et al.*, 1997).

Low haemoglobin level is shown by complex signs and symptoms such as dizziness, tiredness, headache, and paleness. Haemoglobin levels less than 11g/dl is referred to as anaemia WHO, (1996). The relative contribution of helminth infections to iron deficiency varies by sex, age, and population and is not well described in many populations (Dreyfuss *et al.*, 2000). Helminth infection and dietary intake is responsible for 95% of the cases of low haemoglobin levels or anaemia during pregnancy (Porter and Kaplan., 1999). The most important cause of pathological chronic loss of blood and iron during pregnancy in the tropics is hookworm and other soil-transmitted helminths (Brooker *et al.*, 2008). At a hospital in Kathmandu, Nepal, hookworm infection was associated with severe but not moderate anaemia among women receiving antenatal care Bondevik *et al.*, (2000).

Data on the epidemiology of iron deficiency anaemia in East Africa and elsewhere, point to the important contribution of hookworm infection to this condition (Ayoya *et al.*, 2006). Hookworm infection has been established as a strong predictor of iron deficiency (Stoltzfus *et al.*, (1997), but a limited number of studies have examined their potential patho-physiology in pregnant women (WHO, 1993).

Previous surveys showed variations in the prevalence and intensity of intestinal helminths among pregnant women in Kenya, An additional challenge is exclusion of this group from deworming programmes without considering the risks-benefits ratio (Van Eijk *et al.*, 2009).

The burden, prevalence, and species distribution of intestinal helminths in pregnant women in the study area have not been previously documented. The research questions therefore are: what

is the prevalence of intestinal helminthic infection among this population and what is the worm species commonly encountered. This study investigated prevalence and intensity of intestinal helminth infection, their relationship with maternal haemoglobin concentration and socio-economic factors that predisposes pregnant women attending antenatal services at the Kitale District Hospital to infection. This aimed at getting answers to assist policy makers to formulate desirable intervention measures.

## **1.2 Statement of the Problem**

Intestinal helminths in pregnant women are among the neglected tropical diseases. They cause 300 million deaths annually. Kitale District Hospital records of women who attend antenatal clinic show that 200 pregnant women attend the clinic monthly. Majority are anaemic, and do eat soil. Information on the cause of anaemia is lacking. Intestinal helminths have been incriminated. This study was undertaken to determine the prevalence and intensity of intestinal helminth infection in pregnant women attending antenatal clinic at Kitale District Hospital.

## **1.3 Objectives.**

### **1.3.1 General Objective.**

Asses the prevalence and intensity of intestinal helminth infection in pregnant women, attending antenatal clinic at Kitale, district hospital in Western Kenya.

### **1.3.2 Specific objectives**

1. To determine the prevalence of intestinal helminth species in pregnant women attending antenatal clinic at Kitale District Hospital.
2. To evaluate the association between intestinal helminth infection and maternal haemoglobin level.
3. To determine socio-economic factors that predisposes pregnant women to intestinal helminth infection.

## **1.4 Null Hypotheses**

1. Various species of intestinal helminths are not prevalent in pregnant women attending antenatal clinic.

2. Intestinal helminth infections do not affect maternal haemoglobin levels.
3. Socio-economic factors do not predispose pregnant women to intestinal helminth infection.

### **1.5 Justification**

Pregnant women are excluded from deworming programs without considering the risks-benefits ratio. Stool examination is not done routinely on pregnant women for early diagnosis of intestinal helminths. Information on prevalence of intestinal helminths that cause anaemia in the study area is lacking. This study was undertaken to identify intestinal helminths, their prevalence including socio-economic factors among pregnant women attending antenatal clinic at Kitale District Hospital.

## CHAPTER TWO

### LITERATURE REVIEW

#### 2.1 Aetiology of intestinal helminth infections in humans

The most common intestinal helminth infections are caused by hookworm (*Necator americanus* and *Ancylostoma duodenale*), *Trichuris trichiura* and *Ascaris lumbricoides*. The intestinal helminthiasis is an ancient disease that continues to cause misery and disability in poor populations. Thousands of rural and impoverished villagers throughout the tropics and subtropics are often chronically infected with several different species of parasitic worms (Hotez., 2007). About 2 billion harbour these infections worldwide, of which 300 million suffer associated severe morbidity, (Bundy *et al.*, 2000). In 1999, WHO estimated that soil transmitted helminthiasis represented more than 40% of the disease burden due to all tropical diseases (WHO, 2003).

According to WHO estimates, globally there are 800-1000 million cases of round worms (*Ascaris lumbricoides*), 700-900 million cases of the hookworm (*Necator americanus* and *Ancylostoma duodenale*) and 500 million cases of the whipworm (*Trichuris trichiura*) (WHO, 1986). Although acute symptoms of infection are uncommon, numerous studies have shown a consistent association between intestinal nematode infection, such as *Ascaris lumbricoides* and diminished food intake and weight loss (Gyorkos *et al.*, 2004). The amount of work done by a woman per day definitely decreases when she is infected by helminths, which produce a double burden for a woman in some rural farming community. Women may even acquire helminth infections in the process of growing family's food (Stephenson *et al.*, 2002).

Geohelminth infections in pregnancy have been associated with maternal iron deficiency, and impaired nutritional status, decreased infant birth weight, intra-uterine growth retardation, and adverse birth outcomes (WHO, 2002). Data from the early 1990s suggest that 44 million of the developing world's 124 million pregnant women harboured hookworm infection (Huddle and Gibson, 1999). Numbers like this have led to an increased interest in the topic of hookworm-related anaemia during pregnancy (Gyorkos *et al.*, 2006). The gastrointestinal blood loss, mal-absorption and appetite inhibition may further aggravate the iron, zinc and protein energy deficiencies and the anaemia of pregnancy (Huddle and Gibson., 1999).



Studies have revealed an association between the presence of hookworm eggs in stool, in the last trimester of pregnancy and low haemoglobin concentration. Studies in Kenya and Zanzibar also revealed an association between the presence of hookworm and low haemoglobin in both children and adults, and this was particularly significant in pregnant women (Mary and Akamori., 2005). In a previous study, moderate and heavy hookworm infection and co-infection of moderate and heavy hookworm and *Trichuris* infections were found to have a statistical significant association with low haemoglobin concentration (Renee *et al.*, 2005).

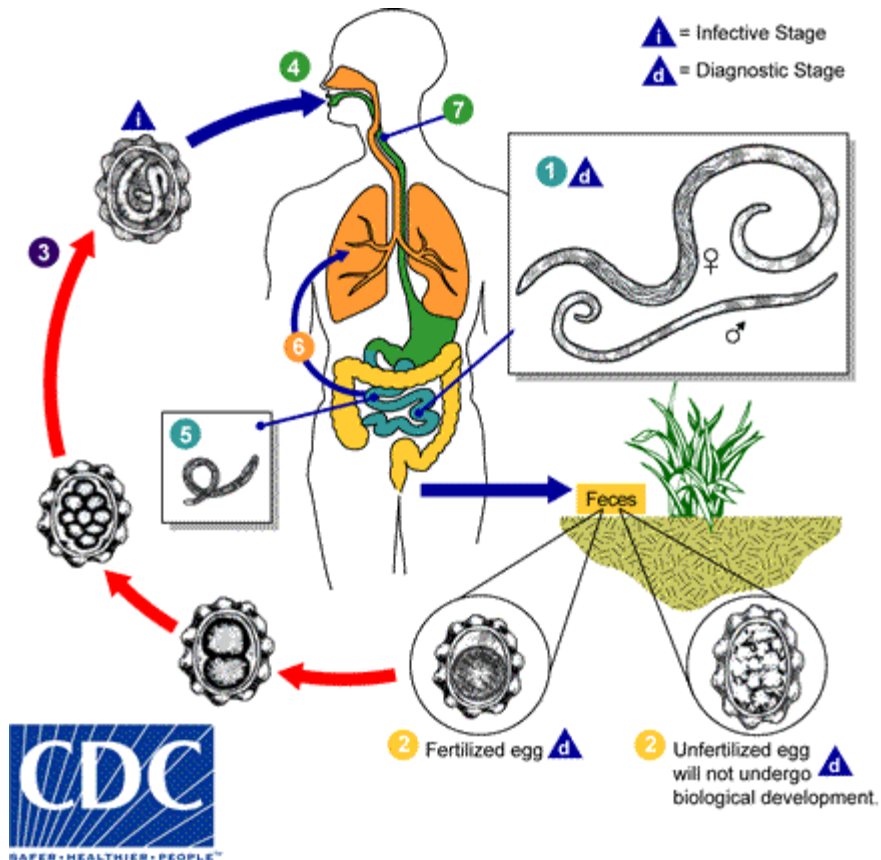
A study conducted among pregnant women at Jimma university hospital in Ethiopia showed a statistical significant difference between anaemic and non-anaemic cases with hookworm infection Belachew and Legese. (2006). With the understanding that chronic hookworm infection can lead to anaemia, many people are now questioning the treatment of hookworm and its effects in severe anaemia rates and also on maternal and child health. Evidence suggests that the contribution of hookworm to maternal anaemia merits that all women of child-bearing age living in endemic areas be subjected to periodic antihelmintic treatment. So far studies have validated recommendations to treat infected pregnant women for hookworm infection during pregnancy. Helminthic infected pregnant mothers present significant lower levels of haemoglobin, and obviously higher levels of eosinophilia (Alfonso *et al.*, 2006).

Gastrointestinal blood loss; mal-absorption and appetite inhibition may further aggravate the iron, zinc and protein energy deficiencies and low haemoglobin concentration in pregnancy (Huddle and Gibson., 1999). Heavy hookworm and *Trichuris* infections were found to have a statistical significant association with low haemoglobin concentration in pregnancy (Renee *et al.*, (2005). The World Health Organization even recommends that infected pregnant women be treated after their first trimester (Bethony *et al.*, 2006). Regardless of these suggestions, only Madagascar, Nepal and Sri Lanka have added deworming to their antenatal care programs (Brooker *et al.*, 2008). The lack of deworming of pregnant women is explained by the fact that most individuals still fear that anthelmintic treatment will result in adverse birth outcome.

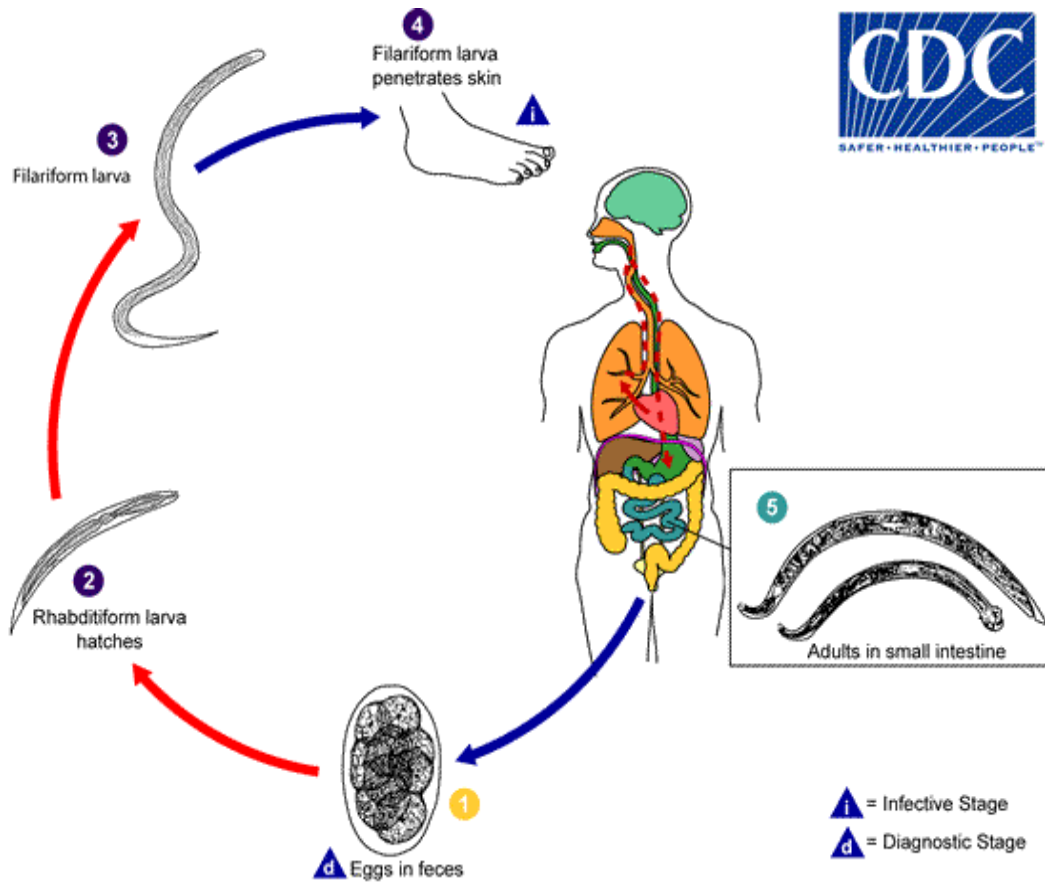
A study done comparing a group of pregnant women treated with mebendazole with a control placebo group, AQillustrated rather similar rates in adverse birth outcomes. The treated group demonstrated 5.6% adverse birth outcomes, while the control group had 6.25% adverse birth outcomes (Gyorkos *et al.*, 2006). Furthermore, another study illustrated that treatment for

hookworm infection actually led to positive health results in the infant. The study concluded that treatment with mebendazole plus iron supplements during antenatal care significantly reduced the proportion of very low birth weight infants when compared to a placebo control group. So far, studies have validated recommendations to treat infected pregnant women for hookworm infection during pregnancy (Larocque *et al.*, 2006).

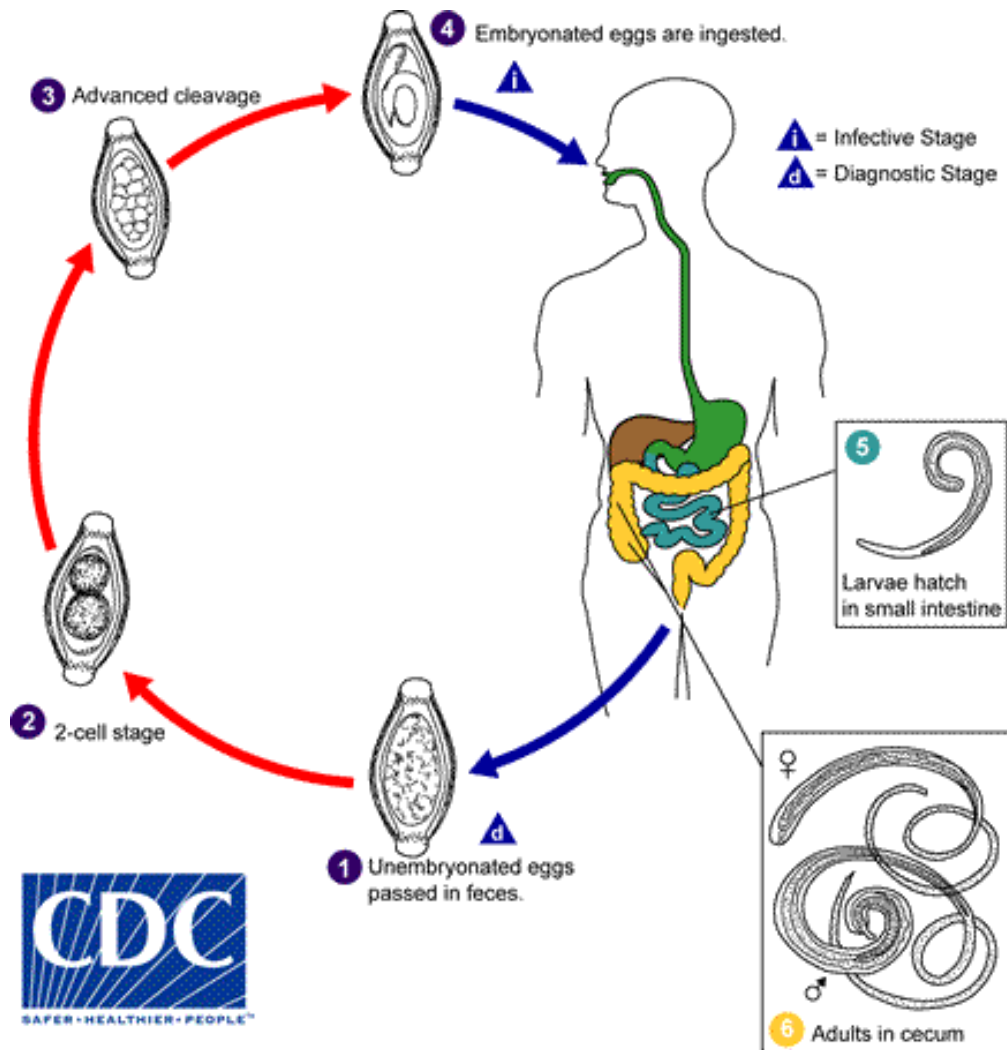
## 2.2 Life cycle of intestinal helminths



**Plate 1:** Life Cycle of *Ascaris lumbricoides* (Giant intestinal roundworm) (courtesy: CDC)



**Plate 2 :** Life cycle of (Hookworms) *Necator americanus* and *Anclostoma duodenale*(Courtesy: CDC)



**Plate 3:** Life Cycle of *Trichuris trichiura*, also called the human whipworm (Courtesy: CDC)

Adult hookworms of the genera *Necator* and *Ancylostoma* parasitise the upper part of the human small intestine, whereas *Ascaris* roundworms parasitise the entire small intestine and adult whipworms (*Trichuris trichiura*) live in the large intestine, especially the caecum (Despommier *et al.*, 2001). The parasites can live for several years in the human gastrointestinal tract. Human beings are regarded as the only major definitive host for these parasites, although in some cases *Ascaris* infections can also be acquired from pigs (Crompton, 2001).

Intestinal helminths vary greatly in size, and female worms are larger than males, (Despommier *et al.*, (2005). After mating, each adult female produces thousands of eggs per day, which leave the body in the faeces. People become infected with *T trichiura* and *a lumbricoides*

by ingesting the fully developed eggs. After ingestion of *Trichuris* eggs, the released larvae moult and travel to the colon where they burrow into the epithelia and develop into adult whipworms within about 12 weeks. Despommier *et Al.*,(2001). *Ascaris* larvae penetrate the intestinal mucosa and after an obligatory extra intestinal migration, they enter the liver then the lungs, before passing over the epiglottis to re-enter the gastrointestinal tract and develop into egg-laying adult worms about 9–11 weeks after egg ingestion (Jeffrey *et al.*, 2006).

*N americanus* and *A duodenale* hookworm eggs hatch in soil. The larvae moult twice to become infective third-stage larvae, which are non-feeding but motile organisms that seek out higher ground to improve the chance of contact with human skin. After skin penetration, they enter subcutaneous venules and lymphatic vessels to access the host's afferent circulation. Ultimately, the larvae become trapped in pulmonary capillaries, enter the lungs, pass over the epiglottis, and migrate into the gastrointestinal tract (Hotez *et al.*, 2004). About 5–9 weeks are needed from skin penetration until development of egg-laying adults. *A duodenale*, larvae are also orally infective, and lactogenic transmission during breastfeeding has been postulated. Soil-transmitted helminths do not reproduce within the host. This feature is crucial for understanding of the epidemiology and clinical features of intestinal helminth infections, as well as the approaches to their control.

### **2.3 Epidemiology of intestinal helminths.**

Intestinal helminth infections are widely distributed throughout the tropics and subtropics. Climate is an important determinant of transmission of these infections, with adequate moisture and warm temperature essential for larval development in the soil (Brooker and Michael., 2000). Equally important determinants are poverty and inadequate water supplies and sanitation. (Desilva *et al.*, 2003). In such conditions, intestinal helminth species are commonly co endemic. With the exception of *Strongyloides stercoralis*, helminths do not replicate within the human host. This fundamental aspect of helminth biology establishes a set of transmission dynamics quite different from those for viruses, bacteria, fungi, and protozoa. For example, prevalence which is the proportion of persons in a defined population at a given time point infected with the helminth Fletcher and Fletcher.,(2005), is seldom used as the only measure to assess the epidemiological situation for that intestinal helminth infection. This is because morbidity is

associated with the number of worms infecting the host (worm burden) rather than the absence or presence of infection.

Prevalence is commonly combined with worm burden also referred to as the intensity of infection, which is commonly measured by the number of eggs per gram (EPGs) of faeces for intestinal helminths (Anderson, 1982). Based on EPGs and their association with morbidity, individuals are classified into categories of light, moderate, and heavy infection (Montresor *et al.*, 1998). Climate and topography are crucial determinants of the distribution of intestinal helminth infections (Brooker., 2007). Soil-transmitted helminths are highly affected by surface temperature Brooker., (2003), altitude, soil type, and rainfall (Appleton and Gouws, 1996). An increasing number of studies of helminth epidemiology have shown that it is common for individuals to be infected with more than one species of helminths (Brooker., *et al.*, 2000). A number of epidemiological studies have indicated that individuals infected with multiple species of helminth often harbour heavier infections than individuals infected with a single helminths species (Booth., 1998; Needham., 1998).

An important consequence of simultaneous infection with the parasites (Ancylostomiasis) is severe anaemia (Brooker., 2006); Mwangi., 2006). Much of epidemiological research has focused on heterogeneity in the intensity of helminth infection by age. Changes with age in the average intensity of infection tend to be convex, rising in childhood and declining in adulthood. For *A. lumbricoides* and *T. trichiura*, the heaviest and most frequent infections are in children aged 5–15 years, with a decline in intensity and frequency in adulthood (Chan *et al.*, 1996). In contrast, hookworm frequently exhibits a steady rise in intensity of infection with age, peaking in adulthood (Bethony, 2002).

## **2.4 Pathology of intestinal helminths**

### **2.4.1 Hookworm infection**

Infection with hookworm is generally considered to be asymptomatic, but it is an extremely dangerous infection because its damage is silent and insidious. There are general symptoms that an individual may experience soon after infection. Ground-itch, which is an allergic reaction at the site of parasitic penetration and entry, is common in patients infected with *N. americanus*. Additionally, cough and pneumonitis may result as the larvae begin to break into the alveoli and

travel up the trachea. Once the larvae reach the small intestine of the host and begin to mature, the infected individual will suffer from diarrhoea and other gastrointestinal discomfort. However, the “silent and insidious” symptoms are mainly related to chronic, heavy intensity hookworm infections (Hotez and Prichard, 1995).

Major morbidity associated with hookworm is caused by intestinal blood loss, iron deficiency anaemia, and protein malnutrition (Hotez and Pritchard, 1995). They result mainly from adult hookworms in the small intestine ingesting red blood cells, rupturing erythrocytes, and degrading haemoglobin in the host (Hotez *et al.*, 2005). Hookworm infection causes mechanical laceration and enzymatic damage to the mucosa of the small intestine leading to approximately 0.05 ml/dl of blood loss per adult *N. americanus* and approximately 0.25 ml/dl per adult *A. duodenale* (Huddle *et al.*, 1999). This long term blood loss can manifest itself physically through facial and peripheral. Oedema and eosinophilia caused by iron deficiency anaemia.

Recent research has focused on the potential of adverse maternal-foetal outcomes when the mother is infected with hookworm during pregnancy (Bethony *et al.*, 2006). In contrast to most intestinal helminthiasis where the heaviest parasitic loads tend to occur in children, hookworm prevalence and intensity can be higher among adults. The explanation for this is that hookworm infection tends to be occupational, plantation workers, coalminers and other groups maintain a high prevalence of infection among themselves by contaminating their work environment. However, in most endemic areas, adult women are the most severely affected by anaemia, because they also have much higher physiological needs for iron such as menstruation and repeated pregnancy (Bethony *et al.*, 2006).

#### **2.4.2 Infection with *Trichuris trichiura***

Adult *T. trichiura* (whipworms) live preferentially in the caecum, although in heavy infections, whipworms can be seen throughout the colon and rectum. The adult parasite leads both an intracellular and an extra cellular existence, with the anterior end embedded in epithelial tunnels within the intestinal mucosa and the posterior end located in the lumen. Inflammation at the site of attachment from large numbers of whipworms, results in colitis. Longstanding colitis produces a clinical disorder that resembles inflammatory bowel diseases including chronic abdominal pain, diarrhoea, and the sequelae of impaired growth, low haemoglobin and finger

clubbing. Trichuris dysentery syndrome is an even more serious manifestation of heavy whipworm infection which results in chronic dysentery and rectal prolapse (Bundy and Cooper, (1989). Blood loss can be a feature of *Trichuris trichiura* infection, but it is less prominent than in hookworm.

### **2.4.3 Infection with *Ascaris lumbricoides***

The presence of large numbers of adult ascaris worms in the small intestine can cause abdominal distension and pain. They can also cause lactose intolerance and malabsorption of vitamin A, and possibly other nutrients Taren *et al.*, (1987) which might partly cause the nutritional and growth failure. Adult worms can enter the lumen of the appendix, leading to acute appendicular colic and gangrene of the appendix tip, resulting into a clinical picture indistinguishable from appendicitis. By contrast with intestinal obstruction, hepatobiliary and pancreatic ascariasis occurs more commonly in adults especially women than in children, presumably because the adult biliary tree is large enough to accommodate an adult worm. *Ascaris lumbricoides* infections are commonly asymptomatic, although clinical complications of extra-intestinal or high numbers of *ascaris* have been well described. *A. lumbricoides* infection has been associated with impaired fat digestion, reduced vitamin absorption, and temporary lactose intolerance. However, treatment has shown to improve nutritional status (Stephenson *et al.*, 2000; WHO, 2002).

## **2.5 Prevention and control of intestinal helminths.**

To achieve sustainable control of worm infections while maintaining high coverage of anthelmintic treatment, it is essential to ensure access to safe water, adequate sanitation facilities and good hygiene at the community level (WHO, 2004). Combination therapy with drugs with differing modes of action is an alternative strategy to improve efficacy and lower the risk of resistance.

A comprehensive control strategy according to (WHO, 2004) for helminth infection should include: ensuring wide availability of anthelmintics for helminth infections in all health services in endemic areas; ensuring good management of symptomatic cases; regular treatment of all children at risk - including adolescent girls through school and community base initiatives; treating pregnant women at risk, through antenatal care and other women's health programme;



ensuring a safe water supply and adequate sanitation facilities in all schools, ensuring provision of adequate water and sanitation facilities at household/ community level; promoting good hygiene and sanitation practices among schoolchildren; caregivers and to the communities (hand-washing, use of latrines; use of footwear) through community capacity development activities.

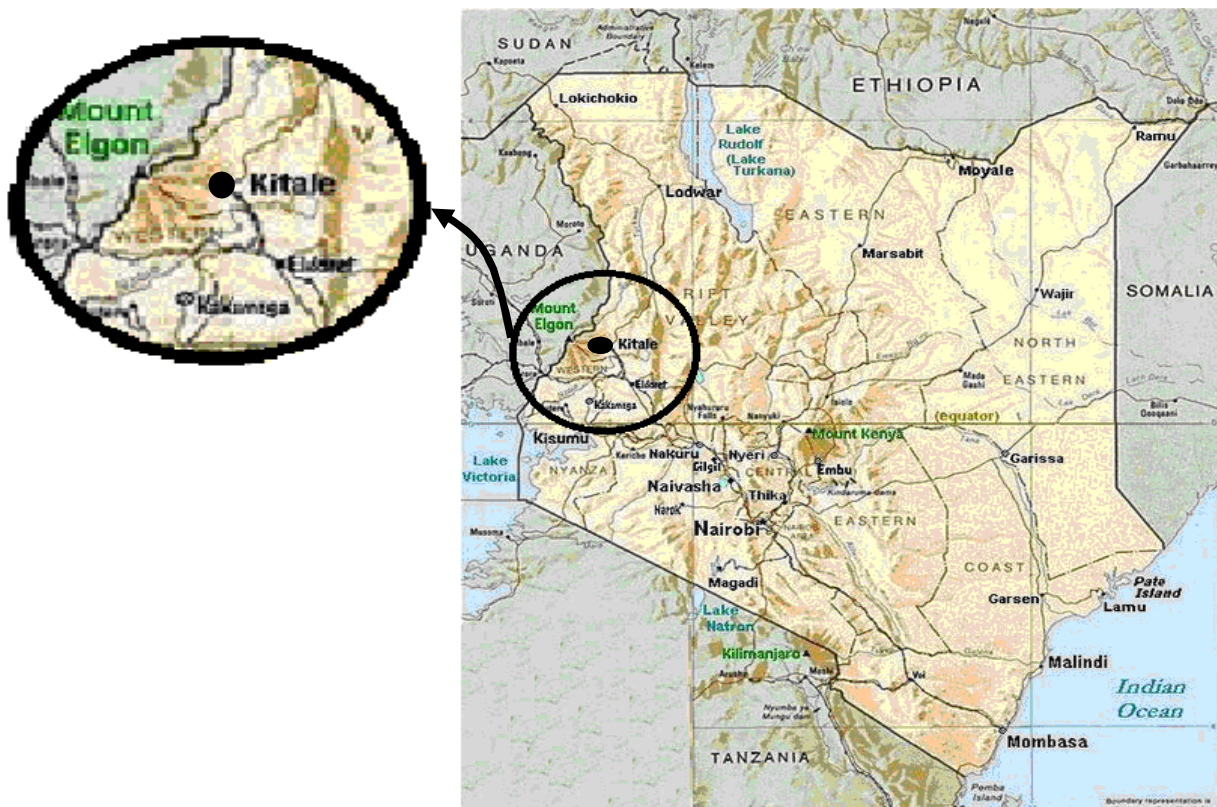
Vaccination remains the method of choice to control intestinal helminth infection, because it offers the possibility of a simple, single step for the interruption of infection, disease, and transmission. Several substantial obstacles impede vaccine development against intestinal helminths Maizels *et al.*, (1999), including the lack of good animal models, and a poor understanding of the events that permit intestinal helminths to endure for years, in their human host in the face of a potent immune response.

## CHAPTER THREE

### MATERIALS AND METHODS

#### 3.1 Study area

This study was conducted in Kitale District Hospital located in Kitale town, whose Population is 20,000 people as per 2009 census. Kitale town is located between Latitude  $1^{\circ} 01' 58''$  North and Longitude  $35^{\circ} 00' 02''$  East. This is an agricultural area with high rainfall. Majority of women spent most of their time tilling land bare feet, this exposes them to helminth infection especially *Necator americanus*. It consists of slum settlements such as Kipsongo, Folkland and Shimo la Tewa. There are also town residents and rural set ups such Bikeke, Cherengany, Kiminini and Mois Bridge. This area was chosen for study because previous research in western Kenya has reported a high prevalence of Hookworm in comparison with *A. lumbricoides* and *T. trichiura* infections (Luoba *et al.*, 2005; Brooker *et al.*, 2000).



**Plate 4 :** Location of the Kitale District Hospital, Kenya

Source: <http://upload.wikimedia.org/wikipediacommons/4/49/Kenya-relief-map-towns>

### 3.2 Study Design

A hospital-based descriptive cross-sectional survey was carried out. Consecutive sampling was used to recruit participants that met the required criteria.

### 3.3 Target Population

The target population recruited in the study were pregnant women of ages between 18 and 5 years, seeking antenatal services at the Kitale District Hospital, residents of the study area, who had not received anthelmintics treatment for the last 3 months. They were requested to give consent. Those with ova of *Schistosoma mansoni* in their stool and malaria parasites in their peripheral blood films were excluded from the study because these are blood parasites but are also associated with low haemoglobin concentration.

### 3.4 Sample size determination

The required sample size for this study was calculated based on the prevalence rate of 11.2% of Hookworm Luoba *et al.*, (2005). The 95% confidence level and 5% marginal error, sample size (n) was determined using the formula Mugenda and Mugenda., (1999).

$$n = \frac{Z^2 P (1 - P)}{D^2}$$

Whereby:

D is margin of error (0.05)

n is the minimum sample size

P is the estimated prevalence (11.2%)

Z is the standard normal deviate that corresponds to 95% confidence interval (1.96)

$$n = \frac{(1.96)^2 \times 0.112 (1 - 0.112)}{0.05^2} = 152.828 \text{ rounded up to } 153$$

Therefore 153 pregnant women were recruited in the study. This was the minimum number of sample required for the study based on 11.2% prevalence of Hookworm which was the highest

compared to the prevalence of *A. lumbricoides* and *Trichuris trichiuria*, in a study done in Nyanza province of western Kenya, to determine the effect of earth-eating and reinfection with intestinal helminths among pregnant and lactating women Luoba *et al.*, (2005). Consecutive sampling was done at the health facility whereby every pregnant woman who fitted the inclusion criteria and consented was recruited into the study.

### **3.5 Data collection**

#### **3.5.1 Methodology: Objective 1 Prevalence and intensity of intestinal helminth infection**

##### **Stool Collection and Processing**

A sample of fresh stool specimen was collected from all the 153 participants who consented. Subjects were provided with a labeled leak proof stool container (polypots), toilet paper, and applicator stick. Approximately 5gm of stool specimens was collected in to each polypot, using applicator stick. The stool specimens were examined microscopically within 24 hours of collection using the Kato-Katz technique (WHO, 1991). The procedure measures the prevalence and intensity of infection since it provides an accurate measure of the number of eggs present per gram of stool. For each stool sample two Kato slides were made and the average of the total number of eggs was taken. The magnifications of x10 and x40 were used respectively to visualize and identify the ova/eggs of intestinal helminths. Haradamori test tube filter paper method Garcia., (2001), was employed to culture hookworm eggs to filariform larvae. *Necator americanus* and *Ancylostoma duodenale*, filariform larvae were differentiated microscopically based on differences in their body morphology.

##### **Kato Katz Technique**

Each stool specimen was prepared using a sieve and a calibrated template to contain 47.1mg of stool. The preparation on the glass slide was covered with glycerin/malachite green impregnated cellophane. The preparation was then turned upside down on a flat surface and pressed gently to spread the stool sample ready for reading. The slides were examined within one hour to avoid over clearing of hookworm eggs by glycerine. All eggs in each preparation were counted to determine the number of eggs per gram. The egg counts were classified as Light infection, Moderate infection, and Heavy infection WHO, (1987), as follows Ascaris light infection (1-4999 eggs/gram), Moderate infection (5000-49,999 eggs/gram), and Heavy infection (> 50,000 eggs/gram). Hook worm-light infection (1-999 eggs/gram), Moderate infection (2000-

3999 eggs/gram), and Heavy infection (>4000 eggs/gram). *Trichuris trichiura*, light infection (1–999), Moderate infection (1000–9999) and Heavy infection (10,000) eggs/gram.

### **Haradamoï technique**

Narrow filter paper strips of about 5 inches that slightly tapered at one end was cut for each stool specimen that had hookworm eggs. 1 gram of faeces was smeared at the centre of the strip. 4 millilitre of distilled water was added to 15 millilitre conical centrifuge tube. The paper strip was inserted into the tube so that the tapered end was near the bottom of the tube. The water level was at slightly 0.05 inches below the faecal point. The tube was plugged using cotton wool and allowed to stand upright in a rack at 25 degrees centigrade for 10 days. Small amount of the fluid was withdrawn from the bottom of the tube and a smear was prepared on a glass slide. The preparation was coverslipped and examined microscopically using 10 x objectives. Filariform larvae were examined for typical morphological features to differentiate between the two species of hookworm.

### **3.5.2 Methodology: Objective 2 Association between intestinal helminth infection and maternal haemoglobin level.**

#### **Blood Sample Collection and Analysis**

To evaluate the association between intestinal helminth infection and maternal haemoglobin level, blood samples were collected from pregnant women using sterile syringe and needle, after sterilizing the cubital vein on the arm using 70% methylated spirit. The blood was transferred to heparinised vials to avoid clotting. Hemoglobin levels were estimated using coulter counter machine. This was done by placing heparinised blood sample in an automated coulter counter machine, that processed and red out the results in two minutes. Low haemoglobin may result from other causes apart from intestinal helminths. In order to differentiate this from other causes, white blood cell count (Eosinophils) was done using the coulter counter machine. Raised eosinophil of more than 6% is a positive indicator of parasitic infection (Cheesbrough, 2005).

Intestinal helminths (Hookworms and *Trichuris*), suck blood leading to low haemoglobin concentration that results to iron deficiency anaemia. To diagnose iron deficiency anaemia, peripheral blood films (pbf) were made from already collected blood, air dried and fixed using 70% methanol. Staining was done using 10% leishman stain for 10 minutes and examined using oil immersion with x100 objective. The presence of anisocytosis, poikilocytosis and microcytic,

hypochromic red cells suggested iron deficiency anaemia (Cheesbrough, 2000). Presence of Malaria parasites was determined in this film to exclude malaria infected clients from the study.

### **3.5.3 Methodology: Objective 3 Socio-economic factors that predisposes pregnant women to intestinal helminth infection.**

A semi structured questionnaire was developed and administered to pregnant women prior to stool and blood sample collection to obtain age, marital status, geophagy, educational level, occupation, home environment and sanitation. This was to address socio economic factors that pre dispose pregnant women to intestinal helminth infection. The use of questionnaire is justified for it enables coverage of a wide area and extensive contents within a short period of time. Quality control was performed by daily review of each questionnaire by the researcher for immediate remedy of any error or problems.

### **3.6 Data analysis**

Data was analyzed with the Statistical Package for Social Science (SPSS version 16.0). In order to determine prevalence and intensity of intestinal helminth infection, data generated through egg count was analysed using descriptive statistics (percentage scores). Helminth infection was determined by counting and data generated was categorised into 3 groups (low, moderate, and heavy).

In order to evaluate association between intestinal helminth infection and Haemoglobin levels plus eosinophil count, Chi-square test was used. In order to determine Socio-economic factors that predispose pregnant women to helminth infection bivariate model was used. Since helminth infection was the outcome of interest, it was categorized in to a binary variable where those with helminth infection were recorded as 1 and those without condition of interest as 0. Independent factors considered for bivariate model were, age category, hand washing, education level of the mother, type of housing, wearing of shoes, mode of waste disposal, source of domestic water, type of residence and occupation status. Level of statistical significance was chosen as 1% in this study.

### **3.7 Ethical Consideration**

The study sought ethical clearance from Egerton University ethics review committee, and consent from Kitale District Hospital. A written informed consent was sought from the respondents to participate in the study. Questionnaire was administered to every participant before stool and blood collection. Special codes were used to maintain confidentiality.

Completed questionnaires were kept under a key and lock cabinet accessible only to the principal researcher. Pregnant women infested with intestinal helminths got an appropriate treatment at the hospital.

## CHAPTER FOUR

### RESULTS AND DISCUSSION

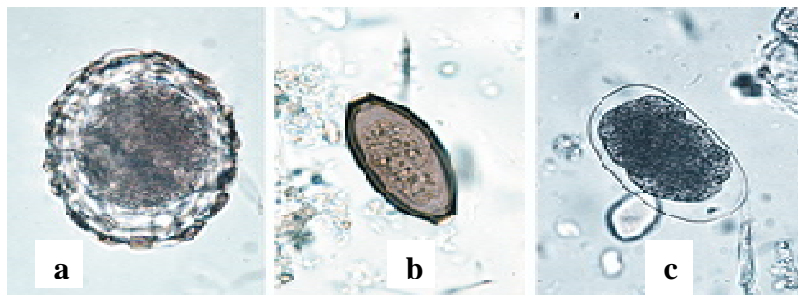
#### 4.1 Results

##### 4.1.1 Objective 1: : Prevalence of Intestinal Helminth Infection.

**Table 1:** Prevalence of Intestinal Helminth Infection.

| No. of samples positive for helminths | No. positive for <i>Ascaris lumbricoides</i> | No. positive for <i>N. Americanus</i> | No. positive for <i>Trichuris trichura</i> | No. positive for <i>Enterobius vermicularis</i> | No. positive for Mixed infection <i>A.lumbricoides/ T.trichiura</i> |
|---------------------------------------|--|---------------------------------------|--|---|---|
| 21/153                                | 10 (47.6)                                    | 6 (28.6)                              | 2 (9.5)                                    | 1 (4.8)   | 2 (9.5)   |

A total of 153 pregnant women were recruited in the study. Overall prevalence was 21 (13.7%). Number not infected were 132(86%). The intensity of intestinal helminth infection among (21) infected pregnant women, was categorized as heavy 3 (14.3%), moderate 9 (42.9%) and low 9 (42.9%), respectively. Plate 5 below is intestinal helminths eggs as they were seen in the microscope.



- a) Egg of *Ascaris lumbricoides*
- b) Egg of *Trichuris trichura*
- c) Egg of *Necator americanus*

**Plate 5:** Photographs of the 3 helminth eggs



This study was able to identify *Necator americanus* as hookworm species infecting pregnant women attending antenatal clinic at Kitale District Hospital. Haradamori test tube filter paper method Garcia, L., (2001), was employed to culture hookworm eggs to filariform infective stage. Differentiation between *Necator americanus* and *Ancylostoma duodenale* was done microscopically basing on differences in their body morphology i.e. *Necator americanus* has the following body features. Head is rounded, mouth spears are clear and divergent, has sheath, anterior end of intestine, is as wide as the oesophageal bulb, there is gap between the oesophagus and intestine, length of the oesophagus is 1/3 in proportional to the whole body and total larval length is about 590um. Plate 6 below is the filariform larvae of *N.amercanus* it was seen under the microscope.



**Plate 6:** Filariform larvae of *Necator americanus*.

#### 4.1.2: Objective 2: Association between intestinal helminth infection and maternal Hb Levels

**Table 2 :** Association between intestinal helminth infection and maternal Hb Levels

| VARIABLE                   |  | HB LEVELS |             | P value |
|----------------------------|--|-----------|-------------|---------|
|                            |  | < 11g%    | >11g%       |         |
|                            |  | No. (%)   | No. (%)     |         |
| Helminth infection         | Infected   | 7 (28%)   | 14 (10.9%)  | 0.032   |
|                            | Not infected   | 18 (72%)  | 114 (89.1%) |         |
| Type of helminth infection | <i>Ascaris lumbricoides</i>                              | 0 (0%)    | 10 (100%)   | 0.013   |
|                            | <i>N. americanus</i><br>(Hookworm)                       | 5 (83.3%) | 1 (16.7%)   |         |
|                            | <i>Trichuris trichura</i>                                | 1 (50%)   | 1 (50%)     |         |
|                            | <i>Enterobius vermicularis</i>                           | 0 (0%)    | 1 (100%)    |         |
|                            | Multiple(mixed) infection ( <i>Ascaris/T trichiura</i> ) | 1 (50%)   | 1 (50%)     |         |

Significance level, (P=0.01)

Moderate and heavy intensities of *Necator americanus* were found to be associated with low maternal haemoglobin levels. There was an association between increasing *Necator americanus* (hookworm) egg counts and decreasing haemoglobin levels, however (P=0.013). No association was found between *Ascaris*, *Trichuris* or *Enterobius* egg counts and haemoglobin level 0 (0%). Egg threshold count of *Necator americanus*, with haemoglobin was found at > 2,000 eggs per gram

**Table 3:** Peripheral blood film (Pbf) and eosinophil count of helminth infection

| VARIABLES             |                         | <i>Ascaris lumbricoides</i> | <i>Necator americanus</i> | <i>Trichuris trichiura</i> | <i>Enterobius vermicularis</i> | Mixed infection ( <i>Ascaris/Trichuris</i> ) | p-value |
|-----------------------|-------------------------|-----------------------------|---------------------------|----------------------------|--------------------------------|--|---------|
| Peripheral Blood Film | Microcytic hypochromic  | 0 (0%)                      | 4 (66.7%)                 | 0 (0%)                     | 0 (0%)                         | 0 (0%)                                       | 0.015   |
|                       | Normocytic normochromic | 10 (100%)                   | 2 (33.3%)                 | 2 (100%)                   | 1 (100%)                       | 2 (100%)                                     |         |
| Eosinophil count      | >6 Raised               | 9 (90%)                     | 4 (66.7%)                 | 0 (0%)                     | 0 (0%)                         | 5 (50%)                                      | 0.06    |
|                       | 1-6 Normal              | 1 (10%)                     | 2 (33.3%)                 | 2 (100%)                   | 1 (100%)                       | 5 (50%)                                      |         |

Significance level, (P=0.01).

The peripheral blood film observations in this study (Table 3), revealed that pregnant women infected with heavy intensities of *Necator americanus* had microcytic hypochromic red blood cells at (P=0.015). The coulter eosinophil count results revealed that 9 (90%) of the women with heavy ascarid infection had eosinophilia (>6) and 4 (66.7%) *Necator americanus* infected women, especially those with moderate and heavy infections had elevated eosinophils. Eosinophil reading in pregnant women infected with *Trichuris trichiura* and *Enterobius vermicularis* was not raised because the intensity of the infection was low.

### 4.1.3 Objective 3: Socio-economic factors predisposing pregnant women to helminth infection.

**Table 4:** Socio-economic factors predisposing pregnant women to helminth infection.

| Variable                |                     | Helminth infection |              | P-value |
|-------------------------|---------------------|--------------------|--------------|---------|
|                         |                     | Infected           | Not infected |         |
|                         |                     | No. (%)            | No. (%)      |         |
| Geophagy                | Eats soil           | 12 (57.1)          | 0(0)         | xx      |
|                         | Does not eat        | 9 (42.9)           | 132 (100.0)  |         |
| Age category            | < 29years           | 18(85.7)           | 73(55.3)     | 0.008** |
|                         | >30years            | 3(14.3)            | 59(44.7)     |         |
| Waste disposal          | Pit latrine         | 20 (95.2)          | 98 (74.2)    | 0.047** |
|                         | Toilet              | 1 (4.8)            | 34 (25.8)    |         |
| Hand washing            | Washes hands        | 11 (53.4)          | 116 (87.9)   | 0.001** |
|                         | Does not wash       | 10 (47.6)          | 16 (12.1)    |         |
| Use of Protective Shoes | Wears shoes         | 2 (9.5)            | 19 (14.4)    | 0.547   |
|                         | Does not wear shoes | 19 (90.5)          | 113 (85.6)   |         |
| Domestic water source   | Tap                 | 14 (66.7)          | 101 (76.5)   | 0.475   |
|                         | Well/river          | 2 (9.5)            | 13 (9.9)     |         |
|                         | Spring              | 5 (23.8)           | 18 (13.6)    |         |
| Education level         | Primary and below   | 8 (38.1)           | 13 (9.8)     | 0.002** |
|                         | Secondary and above | 13 (61.9)          | 119 (90.2)   |         |
| Housing                 | Permanent           | 3 (14.3)           | 71 (53.8)    | 0.001** |
|                         | Mud/semi permanent  | 18 (85.7)          | 61 (46.2)    |         |
| Residence               | Rural               | 10 (47.6)          | 50 (37.9)    | 0.396   |
|                         | Urban               | 11 (52.4)          | 82 (62.1)    |         |
| Occupation              | Employed            | 7 (33.3)           | 73 (55.3)    | 0.061   |
|                         | Not employed        | 14 (66.7)          | 59 (44.7)    |         |

P=0.01 denotes level of significance. .xx denotes that one of the variables was 0 hence the values were not able to be computed. \*\* means the value is significant

At bivariate analysis, factors such as age, waste disposal, hand washing, education level of the pregnant women, and type of housing were significantly associated with helminth infection. (Table 4). Younger pregnant women aged below 29 years had a higher proportion of being infected with helminth infection when compared to their counterparts not infected (85.7% vs. 55.3%) respectively (P=0.05). Women having waste disposal as pit latrines were more likely to have helminth infection when compared to those who were using toilet as source of waste disposal (95.2% vs. 4.8% ), (P=0.047). Similar trend was also seen among those with primary education level where women with primary education level were at a higher risk of helminth infection as compared to their counterparts with secondary level (38.1% vs. 9.8%) respectively. Living in a semi permanent house had a higher chance of getting helminth infection (14.3% vs. 53.8%) (P=0.001) Being employed or unemployed was not significantly associated with helminth infection in this population (P=0.061).

## CHAPTER FIVE:

### DISCUSSION

This study was undertaken to identify intestinal helminths, and their prevalence including socio-economic factors among pregnant women attending antenatal clinic at Kitale District Hospital. Out of 153 stool samples, examined from pregnant women, 21 (13.7%) were diagnosed with intestinal helminths. They were identified as *Ascaris lumbricoides* 10(6.5%), *Necator americanus* 6(3.9%), *Trichuris trichiura* 2(1.3%), and *Enterobius vermicularis* 1(0.7%). These parasites have been reported in some parts of Kenya Van eljik *et al.*, (2009); Luoba *et al.* (2005), and other parts of the world (Artemis *et al.*, 2008).

In this study, an overall prevalence rate of 13.7% reported, was higher than some findings from previous studies. For example a study in Congo revealed (9%), and in Nigeria (12.5%) Mordi *et al.*, (2007); Alfonso *et al.*, (2006) reported a value of 0.7% in Edo state Nigeria. The overall prevalence reported in our study was lower compared to findings from other studies Luoba *et al.*, (2005) reported prevalence of 19.6% among 827 pregnant women in Nyanza Province Kenya).

Alfonso *et al.*, (2006), reported prevalence of 45.1% in Brazil (Sao Paulo State), and 69.7% in Indonesia. Godwin *et al.*, (2010) reported prevalence of 23% among 300 pregnant women in Kassena-Nankana District Ghana. The difference in this study and other studies could possibly be attributed to a relatively small sample size of 153 pregnant women for example compared to 827 in the report by Luoba *et al* (2005). However, this could be verified if a larger sample size is used subsequently in a similar study at the Kitale District Hospital.

The predominance of *Ascaris lumbricoides* compared to other intestinal helminth agreed with some previous reports by Adeyeba and Akinlabi., (2002), as well as Agbolate *et al.*, (2004). It is well established that the infective stages of *A. lumbricoides*, have enormous capacity in withstanding environmental extremes. Furthermore, *Ascaris lumbricoides* eggs are coated with mucopolysaccharide substance which makes these eggs adhesive to different body surfaces. This accounts for their adhesiveness to door handles, dust, fruits and vegetables, paper money and coins (Omorodion *et al.*, 2012). Consequently, due to poor observance of personal hygiene, pregnant women in the study area inadvertently get infected through these means.

The 6.5% prevalence value reported for *Ascaris lumbricoides* in our study was however low compared to what was reported in other areas by different workers. An examination of 2,394 stool samples from Indonesia showed the prevalence of *A. lumbricoides* as 73.7% Widjana *et al.*, (2000). This study value was significantly higher than what was reported by Omudu *et al.*, (2004), who reported a prevalence of 1.8% in Markurdi, Benue State, Nigeria and Ramos *et al.*, (2005), who reported a value of 0.7% in a rural community in Mexico.

Human ascariasis is spread through faecal pollution of soil, and so the intensity of infection depends on the degree of soil pollution (Mordi *et al.*, 2007). Man acquires infection by accidentally ingesting embryonated eggs in contaminated food, drink or soil. *Ascaris* ova are also spread through the agents of flood and coprophagous animals, and can thus be transported to locations far from the defecation sites (Obiamiwe *et al.*, 1990). The eggs are passed unaltered through the intestine of coprophagous animals. The well-protected eggs can withstand drying and can survive for very lengthy periods in soil. This infection is distributed throughout the world.

It is well established that the infective stages of *A. lumbricoides*, have enormous capacity of withstanding environmental extremes. Furthermore, *Ascaris* eggs are coated with mucopolysaccharide substance which makes these eggs adhesive to different body surfaces. This accounts for their adhesiveness to door handles, dust, fruits and vegetables, paper money and coins (Awolaju *et al.*, 2009). Consequently, due to poor observance of personal hygiene especially lack of hand washing before eating, inadvertently leads to ingesting infective eggs leading to infection. However prevalence of *Ascaris lumbricoides* recorded in this study indicates some unhygienic practices among some pregnant women which enhanced transmission.

*Necator americanus* was the second most common parasite species identified in this study, with prevalence value of 3.9%. This value is low compared to the values from other studies from other parts of the country and outside Luoba *et al.*, (2005), reported 11.2%, Hookworm prevalence in pregnant women who eat soil in Kisumu county Kenya, Brooker *et al.*, (2008) reported 74.9% among pregnant women attending antenatal clinic at Kilifi Kenya. Elsewhere Brooker *et al.*, (2008) reported 56.6% in 128 pregnant women at Ukerewe Island Tanzania, 44.5% of the 2507 pregnant women in Entebbe Uganda, and 8.1% of the 1038 pregnant women attending antenatal clinic at Peru, Nine states Venezuela. A study by, Egwuyenga *et al.*, (2004) reported infection rate of 22.5% at Eku in Delta State of Nigeria. Hookworm infections occur by skin

penetration of the L3 stage infective larvae. Poor sanitary disposal of human faeces and indiscriminate defecation are the principal factors in the aetiology of hookworm infections, (Mordi *et al.*, 2007).

Prevalence of *Trichuris trichiura* 1.3% was lower compared to, Luoba *et al* (2005) who reported 4.6% among 827 pregnant women in Nyanza province Kenya, and also 1.7%, reported by, Alakija *et al.*, (1986), in Nigeria. It is however higher than, 0.9% reported by, Baidoo *et al.*, (2010) among pregnant women in Ghana.

Transmission occurs through poor sanitary habits of indiscriminate defecation. Infections usually occur through ingestion of infective ova from contaminated hands, food or drinks. Flood and coprophagous animals play some part in the transportation of the ova to locations other than the defecation site. The low prevalence value generally recorded for this organism supports the claim that it is less common in the tropics than in the temperate regions, (Mordi *et al.*, 2007).

The prevalence of *Enterobius vermicularis* (0.7%) reported in this study was close to the values 0.9% recorded in Ghana among pregnant women, Baidoo *et al*, (2010). Also, Mordi *et al.*, (2007) reported a value of 1.0% in Edo State Nigeria. However, this value was lower compared to 3.5% reported by, Alli *et al.*, (2011) in Nigeria. The study findings support the fact that this infection is distributed throughout the world but less common in the tropics, (Mordi *et al.*,2007). Intestinal helminth infections in this study carry a significant impact for both maternal health and foetal development. Differences in the percentage of the results observed in this study and other studies could be due to the study population, methodology used, geographical location, sample size used, environmental factors and variations of economic status, of the subjects.

It is well-established that human hookworm infection results in intestinal blood loss which, in turn, can contribute to low haemoglobin levels. What has remained unclear and hindered public health policy and planning is the extent to which hookworm is associated with low haemoglobin level during pregnancy, Brooker *et al.*, (2008). The results of our systematic review quantify this relationship and confirm that heavy intensities of *Necator americanus* (hookworm) infection are associated with lower levels of haemoglobin than light infection intensities (P=value 0.013) Other studies identified four conditions necessary to show an association between hookworm infection and haemoglobin, a large sample size; quantitative measures of haemoglobin and hookworm infection; sufficient variation in infection levels; and few other competing causes of



anaemia (Brooker *et al.*, 2008). These conditions are also relevant to interpreting the current results.

The study results showed that pregnant Women infected with *Necator americanus*, 5 (83.3%) had haemoglobin below 11g%, compared to pregnant women who were not infected with *N. americanus*. Various studies in Kenya and other parts of the world have shown similar findings Mary *et al.*, (2005), found an association between heavy intensity of hookworm infection and low haemoglobin in their study carried out in Kenya and Zanzibar. This was significant, both in children and adults, particularly, among pregnant women. A similar association was confirmed by Balachew *et al.*, (2006), among pregnant women attending antenatal clinic at Jimma University, south western Ethiopia. The study results also corroborate those of Larocque *et al.*, (2005) in their study to establish the relationship between intensity of soil-transmitted helminth infections (Hookworm) and low haemoglobin levels during pregnancy in Peru. They reported a significant association between increasing hookworm egg counts and decreasing haemoglobin levels. A study by Godwin *et al.*, (2010), among pregnant women in Kassena-Nankana District, Ghana also indicated that worm infections have greater impact on the haemoglobin levels of pregnant mothers in the district especially hookworm infections.

The study findings corroborate Stoltzfus *et al.*, (1997), who identified Hookworm as important contributor to low haemoglobin levels in many resources limited settings. Previous studies, (Van Eijk *et al.*, (2009); Brooker *et al.*, (2008); Bondevik *et al.*, (2000), showed that heavy intensities of hookworm infection are inversely related to Hb concentrations. Our results also concur with a study done by Ayoya *et al.*, (2006), in Ghana where he found out that heavy infection by hookworm was associated with low haemoglobin levels. At a hospital in Kathmandu, Nepal, hookworm infection was associated with severe but not moderate low haemoglobin among women receiving antenatal care (Bondevik *et al.*, (2000), and in East Africa Stoltzfus *et al.*, (2000); Brooker *et al.*, (1999); found out that egg counts of (200-2000 epg) were associated with low haemoglobin after infection thresholds of 1000 epg and 2000 epg had been reached. In this study, the helminths thresholds were found to be 1,000 epg. These are consistent with the lower category recommendations of moderate hookworm infection WHO (1987), based on data obtained in child populations

The study finding confirms that individuals from poorer households had a significantly higher prevalence and intensity of hookworm infection than individuals from better-off households. This finding is consistent with results from a study carried out among schoolchildren in rural C<sup>o</sup>te d'Ivoire, which employed the same statistical method for measuring socio-economic status Raso *et al.*, (2005). Studies conducted in Kenya and Panama also showed that hookworm is associated with the absence of a latrine Olsen *et al.*, (2001) and low socioeconomic status Holland *et al.*, (1988). In the current study, it is unlikely that differences in hookworm infection according to socio-economic status reflect differences in access to anthelmintic drugs since these are not readily available in local shops. More probable is that observed differences reflect variation in sanitation conditions and housing conditions.

Similar result was obtained by Belachew and Legese., (2006). Most rural pregnant women attending antenatal care walk barefoot. Even those women who have shoe do not wear regularly. They wear shoe when they come to town for antenatal care and for marketing. Walking barefoot may predispose them to hookworm infection and the consequence will result in low haemoglobin especially in pregnant women.

Hookworm sustains its life by blood sucking, a process that ruptures the host capillaries and arterioles followed by the release of a battery of pharmacologically active polypeptides which induces intestinal blood loss. Adult *N. americanus* worm sucks approximately 0.05 ml/dl of blood and *A. duodenale* approximately 0.25 ml/dl of blood per day Huddle *et al.*, (1999). This long term blood loss can manifest itself physically through facial and peripheral oedema and eosinophilia, resulting in iron deficiency anaemia (Zhan *et al.*, 2002; Stoltzfus *et al.*, 1997); Hotez *et al.*, 1995). Pathological studies indicate that *A. duodenale* causes greater blood loss; *N. americanus* also sustains life by sucking blood (Pawlowski *et al.*, 1991).

Epidemiological studies among Zanzibari school children suggested that *A. duodenale* is associated with an increased risk of causing low haemoglobin (Albonico *et al.*, 1998). Thus, where hookworm is exclusively *A. duodenale*, such as in Nepal Dreyfuss *et al.*, (2000), the observed effect on maternal low haemoglobin might be greater. Bundy and colleagues estimated that in low income countries, 44 million (35.5%) out of 124 million pregnant women were infected with hookworm (Budy *et al.*, 1995). A study by Brooker *et al.*, (2008) estimated that 6.9 million (26.7%) out of 25.9 million pregnant women in sub Saharan Africa were infected with

hookworm. These figures could be higher by now especially in rural poor communities where sanitation is not well addressed.

The interaction between *Ascaris lumbricoides* and *Trichuris trichiura* infection and intensity was not surprising, given the common mode of transmission of these two worm species. The study findings confirm those of previous studies Needham *et al.*, (1998); Booth and Bundy., (1992). Infection with *A. lumbricoides* and *T. trichiura* was not significantly associated with low haemoglobin levels in the expectant mothers. These finding confirm those of previous studies (Needham *et al.*, 1998; Booth and Bundy.,1992; Larocque *et al.*, 2005).

However an increasing number of studies of helminth epidemiology have shown that it is common for individuals to be infected with more than one species of helminths (Brooker., *et al.*, 2000). A number of epidemiological studies have also indicated that individuals infected with multiple species of helminth often harbour heavier infections than individuals infected with a single helminths species Booth., (1998); Needham., (1998). In contrast this study found few individuals infected with more than one species of intestinal helminths and the infection was light. This may be attributed to small sample size in this study, geographical location of the study area, individual's personal hygiene and socio economic status of study subjects.

Low haemoglobin in developing countries has multiple causes, including micro-nutrient deficiencies, infectious diseases and inherited disorders (Tolentino *et al.*, 2007). The causal association between haemoglobin and hookworm infection in this study could have been confounded by other causes such as dietary iron insufficiency, sickle cell, a genetic disorder that causes low haemoglobin. The confounders were eliminated through reading of the peripheral blood films. Peripheral blood films of People with low haemoglobin levels, associated with parasitic infection show microcytic hypochromic red cells and their eosinophis are raised, (Cheesbrough., 2005). Peripheral blood films of pregnant women infested with heavy *N.americanus* in this study showed microcytic hypochromic red blood cells (P value 0.015).

The eosinophils were elevated >6% in those infected by *A.lumbricoides* and *N.americanus*. Malaria parasites can be detected in peripheral blood film. This was used to eliminate those infected by malaria parasites from the study, though all the participants were free from malaria. This could be because all antenatal mothers are given treated mosquito nets free of charge by the

Kenya government. Few studies have examined these relationships in pregnant women. In this study the results indicates that heavy intensities of *N. americanus* (hookworm) infection have an impact on the haemoglobin levels in pregnant women attending antenatal services at Kitale District Hospital.

Findings from this study revealed that pregnant women predisposed to intestinal helminth infection included those bellow 29years (P value 0.008), compared to their older counter parts. The study results agrees with A study by Traub *et al* (2004) who noted a decrease in hookworm prevalence after approximately 25 years of age. The prevalence of *A. lumbricoides* and *T. trichiura* was reported to peak in childhood and decline there after around 30 years.

Those with basic primary education (P value 0.002) and living in mud/semi permanent houses (P-value 0.001), had higher chance of intestinal helminth infection compared to their counter parts with secondary level education staying in permanent houses. The results of this study revealed that eating of soil, and lack of regular hand washing ((P value 0.001), contributed to infection by intestinal helminths. Our result was in agreement with (uoba *et al.*, (2005) and also Larry and Janovy; (1996)., cheesbrough; (2005). Poverty, ignorance, geophagy, personal hygiene, and environmental sanitation were found to predispose the subjects to parasitic infection.

Pregnant women living in rural areas in the present study have higher chances of being infected by intestinal helminths compared with their counterparts in urban areas. This may be due to poor environmental sanitation and low socio-economic status in rural areas. This results was in agreement with other study findings Osumba *et al.*, (2002), low socio-economic status and poor environmental sanitation which includes poor methods of refuse disposal predisposes pregnant women to helminth infection.

The cases of intestinal helminths reported in this study may be due to faecal pollution of the soil/environment where the respondents whose stool samples were used. This is in agreement with (Mordi *et al.*, 2007). Their study revealed that soil pollution is thus a major factor in the epidemiology of human helminthiasis. It is well documented for example that *Ascaris* eggs, in particular, have been demonstrated to survive in composted faeces up to 10 months Unimproved pit latrines or random defecation may posse risk of infection. (Feachem *et al.*, 1983).

Discrepancies observed in the findings of this study and previous studies by other researchers, could be attributed to differences in place of study i.e. geographical location, study population and sample size.

## CHAPTER FIVE

### CONCLUSION AND RECOMMENDATIONS

#### 5.1 Conclusion

This study established that intestinal helminth infection is prevalent among pregnant women attending antenatal clinic at the Kitale District Hospital. *Ascaris Imbricoides* was the most prevalent, followed by *Necator Americanus*, *Trichuris trichiura* and *Enterobius vermicularis*. Heavy intensities of *N americanus* infection were found to be associated with low maternal haemoglobin levels. Results from this study indicated that eosinophilia suggested presence of intestinal helminth infection in pregnant women

Socio-economic factors that predispose pregnant women to intestinal helminth infection, included, age, pregnant women below 29 were at more risk of getting infected compared to their older counter part. Others factors included primary education, mud housing, eating of soil (geophagy), improper waste (faeces) disposal and lack of hand washing after toilet use. This information is very useful in the control strategy for intestinal helminthiasis during antenatal care.

#### 5.2. Recommendations

The findings from this study thus support the need for the establishment of a health programme for the control of the intestinal helminths in pregnancy. For this reason, measures should be adopted to monitor, control or prevent this tendency of helminths eggs from invading the body system. Many of the parasitic infections are chronic, and many women enter pregnancy with these pre-existing conditions. Therefore based on the result obtained from this study, I recommend that;

- a) All antenatal clinics and health facilities should offer a routine examination of stool of pregnant women for intestinal helminths and treat the infected women using albendazole.
- b) Health education should be enhanced both in rural and urban slum setups to highlight the principles of basic personal hygiene. These include, the importance of toilet use,

hand washing after visiting the toilet, shoe wearing and effects of eating soil. These will enhance the measures taken to control or prevent infection of intestinal helminths in pregnancy.

- c) This study recommends further study on Risk benefits ratio of intestinal helminths in pregnancy which was not studied here but very relevant to future studies for National Health policy development on control strategy.
- d) More funds are needed to study a large sample size on pregnant women in other geographical areas of Kitale and possibly other areas of the country. This would produce evidence of different intestinal helminths in different ratios, intensities and haemoglobin profiles that can assist in arriving at a comprehensive approach in solving the problem of intestinal helminth infection in pregnancy.

## REFERENCES

- Adeyeba, O.A., Akinlabi, A.M., (2002). Intestinal parasitic infections among school children in a rural community, South West Nigeria. *Nigeria. Journal for Parasitology*. 23: 11-18.
- Agbolade, O.M., Akinboye, D. O., Awolaja, A., (2004). Intestinal helminthiasis and urinary schistosomiasis in some villages of Ijebu North, Ogun State, Nigeria. *African Journal of Biotechnology*, 3 (3): 206-209.
- Alakija, W., (1986). Prevalence of intestinal parasitic disease agents in stools of people in a rural area of Nigeria," *Annals of Tropical Medicine and Parasitology*, vol. 80, no. 5, pp. 545–547, 1986.
- Albonico, M., Stoltzfus, R.J., Saviol, I, L., Tielsch, J.M., Chaway. H.M.(1998) Epidemiological evidence for a differential effect of hookworm species, *Ancylostoma duodenale* and *Necator americanus*, on iron status of schoolchildren. *International Journal of Epidemiology* 27 vol. 27, no.3, pp. 530–537
- Alli, J.A., Okonko., I.O., Kolade, A.F., Nwanze, J.C., Dada, V.K., Ogundele, M., (2011) Prevalence of intestinal nematode infection among pregnant women attending antenatal clinic at the University College Hospital, Ibadan, Nigeria. *Advances in Applied Science Research*, 2 (4): 1-13.
- Alfonso, J., Rodríguez, M., Rosa, A., Cynthia, C., Melissa, A., Marisela, R., Henry, P., Osca U., Gloria, G., Nestor, R., Andrea, M., (2006). Intestinal parasitic infections among pregnant women in Venezuela. *Infectious Diseases of Obstetric and Gynecology*, 10(1155): 23125.
- Appleton, C.C., Gouws, E., (1996). The distribution of common intestinal nematodes along an altitudinal transect in KwaZulu-Natal, South Africa. *Annual Tropical Medical Parasitology* 90:181-188.
- Anderson, M., (1982). Population dynamics of infectious diseases: Theory and Applications. Chapman and Hall. London, United Kingdom, pp. 377.
- Artemis Koukounari., Benson, B.A., Estambale, J., Kiambo Njagi., Bonnie Cundill., Anthony Ajanga., Christopher Crudder., Julius, Otido., Matthew, C.H., Jukes Sian, E., Clarke Simon
- Awolaju, B.A., and Morenikeji., O.A., (2009). Prevalence and intensity of intestinal parasites in five Communities in south-west Nigeria. *African Journal of Biotechnology*, 8 (18) 4542-4546
- Ayoya, M.A., Spiekermann-Brouwer, G.M., Traore, A.K., Stoltzfus, R.J., Garza, C., (2006) Determinants of anaemia among pregnant women in Mali. *Food Nutrition Bulletin*, 27: 311.



- Brooker., (2008). Relationships between anaemia and parasitic infections in Kenyan schoolchildren. *International Journal for Parasitology*, 38 1663–1671.
- Baidoo, S.E., Tay, S.C.K., and H.H, Abruguah., (2010). Intestinal infection and anaemia during pregnancy. A community based study in Ghana. *African journal of microbiology research* 4(16) 1713-1718
- Belachew, T., Yosef, L., (2006). Risk factors for anaemia among pregnant women attending antenatal clinic at Jimma University Hospital, *Ethiopia Medical Journal*. 44, No.3.
- Bethony, P., Brooker, S., Hotez,P., (2006). Soil-transmitted helminth infections: ascariasis, Trichuriasis, and hookworm, *Lancet*, 367:1521–1532.
- Bondevik, G.T., Eskeland, B., Ulvik, R.J., Ulstein, M., Lie, R.T., Schneede, J., Kvale,G., (2000). Anaemia in pregnancy: possible causes and risk factors in Nepali women. *European Journal of Clinical Nutrition*. 54: 3-8.
- Brooker, S., Peshu, N., Warn, P.A., Mosobo, M., Guyatt, H., Marsh, K., Snow, R.W., (1999). Epidemiology of hookworm infection and its contribution to anaemia among pre-school children on the Kenyan coast. *Trans Royal Society of Tropical Medicine and Hygiene*, 93, 240-246.
- Brooker, S., (2003). Mapping soil-transmitted helminths in Southeast Asia and implications for parasite control. *Southeast Asian Journal of Tropical Medicine and Public Health* 34:24-36.
- Brooker, S., Hotez, P.J., Bundy, D.A., (2008).Hookworm-Related Anaemia among Pregnant Women. A systematic Review. *PLoS Neglected Tropical Disease* vol. 2, no. 9, article e291,es
- Brooker, S., Michael, E., ( 2000).The potential of geographical information systems and remote sensing in the epidemiology and control of human helminth infections. *Advances in Parasitology*; 47: 245–288.
- Brooker, S., (2000). Epidemiology of single and multiple species of helminth infections among school children in Busia District, Kenya. *East Africa. Medical Journal*. 77:157-161.
- Brooker, S., (2006). The co-distribution of *Plasmodium falciparum* and hookworm among African schoolchildren. *Malaria journal*. 5:99.
- Brooker, S., (2007). Spatial epidemiology of human schistosomiasis in Africa, risk models transmission dynamics and control. *Trans. Royal Society of Tropical Medicine and Hygiene*. 101:1-8.
- Bundy DAP, Chan MS, Medley GF, Jamison D, Savioli L (2000). Intestinal nematode infections. In *Health Priorities and Burden of Disease Analysis: Methods and Application from Global, National and Sub-National Studies*. Cambridge, USA, Harvard University Press for the WHO and World Bank.

- Bundy, D.A.P., Cooper, E.S., (1989). *Trichuri* sand trichiuriasis in humans. *Advances in Parasitology* 28: 107–173.
- Bundy, D.A.P., Chan Savioli, L., (1995). Hookworm infection in pregnancy. *Trans Royal Society of Tropical Medicine and Hygiene* 89: 521–522.
- Chan, M., Guyatt, L., Bundy, A., Medley, F., (1996). Dynamic models of schistosomiasis morbidity. *American Journal of Tropical Medicine and Hygiene*. 55:52-62.
- Cheesbrough, ., (1998). *Medical Laboratory Manual for Tropical Countries*, Cambridge University Press, UK. p184-234.
- Cheesbrough, M., (2002). *District Laboratory Practice in Tropical Countries Part 1* and Cambridge University Press. Cambridge Low Price. reprinted. Editions. 2000 and 2005.
- Cheesbrough, M., (2004). *District laboratory practice in tropical countries. Part 2*. Cambridge University Press. p.357
- Crompton, D.W., (2001). *Ascaris* and ascariasis. *Advances in Parasitology*. 48: 285–375
- De Silva, N.R.S., Hotez, P.J., Montresor, A., Engels, D., Savioli, L., (2003), Soil-transmitted helminth infections: updating the global picture. *Trends in Parasitology*.19: 547–551.
- Despommier, D., Gwadz, R.W., Hotez, P.J., Knirsch, C.A. P., (2001). parasitic diseases, 5<sup>th</sup> edition. New York: Apple Tree Production, 2005. 11 Crompton DW. *Ascaris* and ascariasis *Advances in Parasitology*. 48: 285–3750
- Dickson, R., Awasthi, S., Demellweek, C., Williamson, P., (2000). Anthelmintic drugs for treating worms in children: Effects on growth and cognitive performance. *Cochrane Database Syst. Rev*.
- Dreyfuss, M.L., Stoltzfus, R. J., Shrestha, J.B., (2000). Hookworms, malaria and vitamin deficiency contribute to anaemia and iron deficiency among pregnant women in the plains of Nepal. *Journal of Nutrition*. 130: 2527-2536.
- Egwuyenga, O.A.D.P., Nmorsi, Q.P.G., ( 2004). Studies on intestinal helminthes infection in Eku, Delta State, Nigeria. 28th annual conference Abstract (20) from the *Nigerian Society of Parasitology*. 20: 24.
- Feachem, R.G., Bradley, D.J., Garelick, H., Mara, D.D., (1983). *Sanitation and diseases: health aspect of Excreta and water management*: Chichester UK: John Wiley & Sons for the World Bank.
- Fletcher H., Fletcher, W., (2005). *Clinical epidemiology: the essentials. 4th edition*. pp. 288
- Garcia, L., (2001). *Diagnostic medical parasitology*, 4<sup>th</sup> edition, P. 786-795. ASM press Washington DC.

- Gloria, G., Nestor, R., Andrea, M., (2006). Intestinal Parasitic infections among Pregnant Women in Venezuela. *Infectious Diseases of Obstetric and Gynecology* 10 (1155): 23125.
- Godwin Fusein., Dominic Edoh., Bugre Gumah., Kelifa Abdul., Wahab Hamid., and David Knightn., (2010), parasitic infection and anaemia during pregnancy in Kassena-Nankana District of Northern Ghana. *Journal of public Health and epidemiology* 2(3) 48-52.
- Gyorkos, W., Casapia, M., Gotuzzo, E., Dendukuri, N., Soto, C., Maclean, D., Larocque, R., (2004). Improving maternal and new born health in hook worm – endemic areas by adding a single-dose anthelmintic to prenatal care. Global Forum for Health Research. Forum 8, Mexico City
- Gyorkos, L., Csapia, G., (2006). Lack of risk adverse birth outcomes after deworming in pregnant women. *Pediatric infectious Diseases.* 25 (9): 791-794.
- Holland, C.V., Taren, D.L., Crompton, D.W.T., Nesheim, M.C., Sanjur, D., Barbeau, I., Tucker, K., Tiffany, J., Rivera, G., 1988. Intestinal helminthiasis in relation to the socioeconomic environment of Panamanian children. *Social Science Medicine*, 26, 209—213.
- Hotez PJ, Molyneux DH, Fenwick A, Savioli L, Takeuchi T: (2008) A global fund to fight Neglected tropical diseases: is the G8 Hokkaido Toyako summit ready? *PLoS Neglected Tropical Diseases* 2008, 2:e220.
- Hotez J., Pritchard I. (1995). "Hookworm infection". *Scientific America*, 272 (6): 68–74.
- Hotez, P., Bethony, J., Bottazzi, E., Brooker, S., Buss, P., (2005). Hookworm: “The Great infection of Mankind”. *PLoS Medicine*. 2(3): 67
- Hotez, J., (2007). Control of neglected tropical diseases. *N. Engiliah. Journal of Medicine.* 357:101- 1027. *Hygiene*, 91(5): 518-520.
- Huddle, M., Gibson, S., Cullinan, R. 1999. The impact of malaria infection and diet on the anaemia status of rural pregnant Malawian women. *European. Journal of Clinical Nutrition.*, 53 (10): 792-801
- Jeffrey Bethony., Simon Brooker., Marco Albonico., Stefan M. Geiger., Alex Loukas., David Diemert., Peter, J. Hotez., (2006). Soil-transmitted helminth infections: ascariasis, trichuriasis, and hookworm, *Lancet*; 367: 1521–1532
- Jex, A. R., Lim, Y. A. L., M. Bethony, J., Hotez, P. J., Young, N. D., & Gasser, R. B. (2011). Chapter 4 -Soil-Transmitted Helminths of Humans in Southeast Asia—Towards Integrated Control. *Advances in Parasitology*, 74, 231-265.
- Larocque, R., Martin, M., Casapia, M., Eduardo, G., Gotuzzo, E., and Theresa, W., Gyorkos, W., (2005). Relationship between intensity of soil transmitted helminth infection and anaemia during pregnancy, *American Journal of Tropical Med Hygiene*, 73 (4)783-789.

- Larocque, C., Gotuzzo, M., Soto, R., Gyorkos, L., (2006). A double-blind randomized controlled trial of antenatal mebendazole to reduce low birth weight in endemic area of Peru. *Tropical Medicine International Health*, 11(10): 1485-1489.
- Larocque, R., Gyorkos, T.W., (2006). Should deworming be included in antenatal packages in hookworm-endemic areas of developing countries? *Canadian Journal of Public Health* 97: 222 -224.
- Larry, S.R., (1996). *Foundations Parasitology Introduction to Parasitology*. 7, 410-415.: The McGraw Hill Companies, Inc.
- Luoba, A.I., Wenzel Geissler, P., Estambale, B., Ouma, J.H., Alusala, D., Ayah, R., Mwaniki, D., Magnussen, P., Friis, H., (2005). Earth-eating and reinfection with intestinal helminth among pregnant and lactating women in western Kenya. *Tropical Medicine International Health*. March. 10(3):220-7.
- Maizels, R.M., Holland, M.J., Falcone, F.H., Zang, X.X., Yazdanbakhsh, M., (1999). Vaccination against helminth parasites: the ultimate challenge for vaccinologists? *Immunology Rev*, 171: 125–147.
- Mary and Akanmori, D., (2005). Determinants of anaemia in pregnancy in Sekyere West District Ghana. *Ghana Medical Journal*. 39(3): 102-107.
- Montresor, A., Crompton, W., Bundy, A., Hall A., Savioli, L., (1998). Guidelines for the evaluation of soil-transmitted helminthiasis and schistosomiasis at community level
- Mordi, R.M., Ngwodo, P.O.A., (2007). A study of blood and gastro-intestinal parasites in Edo State. *African Journal of Biotechnology*, 6 (19): 2201-2207
- Mugenda, O.M., and Mugenda, G.A., (1999) *Research Method. Quantitative and Qualitative Approaches*. Nairobi. Acts Press.
- Needham, C., Kim, H.T., Hoa, N.V., (1998), Epidemiology of soil-transmitted nematode infections in Ha Nam Province, Vietnam. *Tropical Medicine International Health*, 3: 904-12.
- Ozumba, U.C., and Ozumba, N., (2002), patterns of Helminth infection in human gut at the university of Nigeria, *Journal of Health Science*, 48: 263-268.
- Obiamiwe, B.A., Nmorsi, P., (1990). Human gastro-intestinal parasites in Bendel State, Nigeria *Angew Parasitology*, 32: 177-183
- Olsen, A., Samuelsen, H., Onyango-Ouma, W., (2001) A study of riskfactors for intestinal helminth infections using epidemiological and anthropological approaches. *Journal of Biosociety Science*, 33, 569—584.
- Omudu, E.A., (2003). Sustainable human health and excreta management: a parasitological perspective on sanitation and epidemiology of excreta-related parasitic infections. *International Journal of Environmental Issues*, 1(2): 97 – 111.

- Omorodion, O.A., Isaac, C., Nmorsi, O.P.G., Ogoya E. M., Agholor, K.N.(2012) Prevalence of intestinal parasitic infection among tertiary institution students and pregnant women in south-south, Nigeria *Journal of Microbiology and Biotechnology Research* 2 (5):815-819
- Pawlowski, Z.S., Scahd, G.A., Stott, G.J., (1991) Hookworm infection and anaemia. Approaches to prevention and control. Geneva: World Health Organization.
- Porter, R.S., Kaplan, J.L., (1999). The Merck Manual of diagnosis and therapy, 17th Ed edition. White house station, N.
- Peter, J., Simon, B., Phil, J., Bethony, M., Maria, E., Alex, L., Shuva, X., (2004). Hookworm infection, *N English Journal of Medicine*, 351(8): 799 – 807.
- Ramos, F., Moran, P., Gonzalez, E., Garcia, G., Ramiro, M., Gomez, A., Garcia-de Leon, M.C., Melendro, E.I., Valdez, A., Ximenez, C., ( 2005). *American Journal of Tropical Medicine and Hygiene*, 73: 87-91.
- Raso, G., Utzinger, J., Silue, K.D., Ouattara, M., Yapi, A., Toty, A., Matthys, B., Vounatsou, P., Tanner, M., N’Goran, E.K., (2005). Disparities in parasitic infections, perceived ill health and access to health care among poorer and less poor schoolchildren of rural Cote d’Ivoire. *Tropical Medicine International Health* 10, 42—57.
- Renee, L., Martin, C., Edduardo, G., Theresa, G., (2005). Relationship between intensity of soil transmitted helminths infection and anaemia. During pregnancy. *American Journal of Tropical Medicine and Hygiene*, 73(4): 783 – 789.
- Stephenson, S., Latham, C., Ottesen, A., (2000). Malnutrition and parasitic helminth infections. *Parasitology* 121: S23–S38.
- Stephenson, S., Latham, C., Ottesen, A., (2002). Malnutrition and parasite helminth infections. *Parasitology*, 12 (7): 23-38.
- Stoltzfus, R.J., Chwaya, H.M. Tielsch, J.M., Schulze, K.J., Albonico, M., Savioli, L., (1997). Epidemiology of iron deficiency anemia in Zanzibari schoolchildren: the importance of hookworms. *American Journal of Clinical Nutrition*, 65:153-159.
- Stoltzfus, R.J., Chwaya, H.M., Montresor, A., Albonico, M., Savioli, L., Tielsch, J.M., (2000). Malaria, hookworms and recent fever are related to anemia and iron status indicators in 0- to 5-year old Zanzibari children and these relationships change with age. *Journal of Nutrition*, 130, 1724—1733.
- Traub R.J, Robertson ID, Irwin P, Mencke N, Andrew Thompson RC (2004) The prevalence, Intensities and risk factors associated with geohelminth infection in tea-growing Communities of Assam, India. *Tropical Medicine International Health* 9: 688–701.
- Taren, D.L., Nesheim, M.C., Crompton, D.W.,(1987), Contributions of ascariasis to poor Nutritional status in children from Chiriqui Province, Republic of Panama. *Parasitology*; 95: 603–13.

- Tolentino, K., Friedman, J.F., (2007), an update on anaemia in less developed countries. *American Journal of Tropical Medicine and Hygiene*, 77: 44–51.
- Van Eijk, A.M., Lindblade, K.A., Odhiambo, F., (2009). Geohelminth Infections among Pregnant Women in Rural Western Kenya; a Cross-Sectional Study. *PLoS Neglected Tropical Diseases* 3: 370.
- Widjana, D.P., Sutisna, P., (2000). Prevalence of soil transmitted helminths in the rural population of Bali Indonesia Southeast Asian *Journal of Tropical Med. Public Health*, 31(3): 454-459.
- World Health Organization. (2012). World Health Organization: Eliminating soil-transmitted helminthiasis as a public health problem in children progress report (2001–2010) and strategic plan (2011–2020) Retrieved April. [http://whqlibdoc.who.int/publications/2012/9789241503129\\_eng.pdf](http://whqlibdoc.who.int/publications/2012/9789241503129_eng.pdf)
- World Health Organization., (1986). Statistic quarterly reported disease prevention and control
- World Health Organization., (1987) prevention and control of intestinal parasitic Infection. WHO technical report series No. 749.
- World Health Organization., (1991). Basic laboratory methods in medical parasitology. Geneva: World Health Organization,
- World Health Organization., (1993). Prevention and management of severe anaemia in pregnancy. Report of a technical working group. Geneva. WHO/FHE/MSM/ 93.
- World Health Organization (1996)., Report of the WHO Informal Consultation on Hookworm Infection and Anaemia in Girls and Women World Health Organization Geneva. WHO/CTD/SIP/ 96.
- World Health Organization., (2002). Prevention and control of schistosomiasis and Soil transmitted helminthiasis: report of a WHO expert committee.
- World Health Organization., (2003). Schistosomiasis and soil-transmitted helminthiasis: an unprecedented opportunity for control. WHO, (2004). Prevention and control of Schistosomiasis and Soil transmitted helminths.
- Yap, P., Furst, T., Muller, I., Kriemler, S., Utzinger, J., & Steinmann, P. (2012). Determining soil-transmitted helminth infection status and physical fitness of school-aged children. *J Vis Exp*, 66, e3966. <http://dx.doi.org/10.3791/3966>

**APPENDICES**

**APPENDIX A: INFORMED CONSENT**

You are being requested to participate in a research study because you are eligible for this study and your responses might help in controlling intestinal helminth infection in pregnancy. On the questionnaire your name or your identities will not be mentioned. Samples and information given by the participants will serve only for this research not for any other purpose. You have every right to accept or refuse participation in this study. You will be requested to give small amount of blood and stool. Blood will be collected from the vein of your arm using sterile syringe and needle There will be some pain during blood removal but not harmful to your health. If you agree to give samples, then you will be required to answer the questionnaire. Based on the laboratory investigation, pregnant women infested with helminths will be treated free of any cost.

**CONSENT:**

I have read the above information / information have been explained to me and I have fully understood. I have had opportunity to ask questions, and all my questions have been answered to my satisfaction.

Please tick in appropriate box below.

I DO CONSENT (  ). Am willing to participate in this study by giving blood and stool sample and also respond to the questionnaire

I DO NOT CONCENT (  ). I do not wish to participate in the study.

Patient name.....Signature.....Date .....

I certify that I have followed all the study specific procedures described in the standard operation procedure for obtaining informed consent.

Researcher signature.....Date.....Time.....

## APPENDIX B: QUESTIONNAIRE

Questionnaire Number \_\_\_\_\_

Date \_\_\_\_\_

### PREAMBLE

My Name is Antony W. Wekesa, an M.Sc student at the Department of Biological Science, Egerton University. I am carrying out a study on intestinal helminth infection and anaemia among pregnant women seeking antenatal services at Kitale District Hospital. I would be very grateful if you responded to my questions, honestly and exhaustively this is very important for the success of this study. The information you provide will be treated with utmost confidentiality and anonymity. This research has been cleared by Egerton University and Kitale District Hospital authority, your cooperation and sincerity will be highly appreciated.

Thank you for your cooperation.

### GENERAL INSTRUCTIONS

Please kindly respond by ticking (  ) in the itemized questions and write in the spaces provided where applicable . There is no wrong or right answer. Where applicable, more than one answer to the same question can be ticked.

PLEASE, DO NOT INDICATE YOUR NAME ANYWHERE IN THIS QUESTIONNAIRE.

### SECTION A: RESPONDENTS INFORMATION.

1. Age \_\_\_\_\_

2. Marital status: Married (  ), Single (  ), Divorced (  ), Widow (  )

3. Highest levels of education achieved

None (  ), Primary (  ), Secondary, (  ), College (  ), University (  )

4. Where do you live? Urban (  ), Rural (  ), Slum (  ), Other.....



- 5. When did you take antihelminth drugs last.....?
- 6. How do you earn a living? Specify.....
- 7. How many children do you have? ( )
- 8. What type of house do you live in? Specify.....

**SECTION B: FACTORS ASSOCIATED WITH HELMITH INFECTION**

9. Where do you dispose your human waste? Bush ( ), Pit latrine ( ), Flash toilet ( )

Other.....

10. If yes what do you do after visiting the latrine?

11. Where do you get water for domestic use?

Tap ( )                      Protected spring ( )

River ( )                      Bore hole ( )

Other source.....

12. Do you wear shoes especially when working on the farm? 1 Yes ( )    2 No ( )

If yes how frequent.....

13. Have you ever felt like eating soil? 1 Yes ( )    2. No ( )

## APPENDIX C: CONSENT LETTER



### MINISTRY OF MEDICAL SERVICES

#### KITALE DISTRICT HOSPITAL

Tel: (054) 31593, Fax: 31593  
Email: dmsokitale@yahoo.com  
When replying please quote

District Medical services Officer,  
Trans Nzoia/ Uasin Gishu Districts,  
P.O. Box 98,  
KITALE.

REF NO KTD/16.12.2011

16<sup>th</sup> DECEMBER 2011

THE VICE CHANCELLOR,  
EGERTON UNIVERSITY  
SCHOOL OF SCIENCE  
DEPARTMENT OF BIOLOGICAL SCIENCES  
P O BOX 536  
NJORO

ATT. DIRECTOR OF POST GRADUATE SCHOOL

#### RE: CONSENT LETTER

This is to satisfy that ANTONY W. WEKESA a Master of Science (Medical Parasitology) Student Reg. No. SM 17/2792/10, Egerton university has been given a consent by the Hospital authority to carry out his research work on Helminth related anaemia among pregnant women seeking antenatal services at the Hospital.

His research runs from 1<sup>st</sup> December to 30<sup>th</sup> April 2012.

He will be required to collect, Process and examine stool for helminthes ova, then blood for haemoglobin level, white blood cell count and peripheral blood films(PBF).

Only pregnant women that give consent will be included in the study.

A handwritten signature in blue ink, appearing to read 'Dr. Kasembeli'.

Dr Kasembeli G.  
District Medical Services Officer  
KITALE DISTRICT HOSPITAL

**APPENDIX D: ETHICS REVIEW APPROVAL**

**EGERTON**

TEL: 051-2217808  
FAX: 051-2217942



**UNIVERSITY**

P. O. BOX 536  
EGERTON, KENYA

**OFFICE OF THE DEPUTY VICE-CHANCELLOR  
DIVISION OF RESEARCH & EXTENSION**

**RESEARCH ETHICS COMMITTEE**

**Ref: EU/DVRE/028**

**December 6, 2012**

Wekesa Anteny Wanyonyi  
P.O. Box 750  
KAKAMEGA

**RE: APPLICATION FOR ETHICAL APPROVAL OF RESEARCH PROJECT**

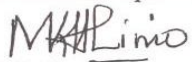
Reference is made to your application for ethical clearance of your research project entitled "*Prevalence of Intestinal Helminth Infection in Pregnant Women Attending Antenatal Clinic at Kitale District Hospital in Kenya.*"

This is to inform you that the Egerton University Research Ethics Review Committee met on 4<sup>th</sup> Dec 2012 and discussed your application. The Committee observed that due consideration was given to the following ethical issues that would arise from the conduct of the study:

- i) That participation is based on informed consent.
- ii) That the specimen collection and testing is a routine activity done in many hospitals and therefore the participants would not be exposed to risks.
- iii) That the identity of the participants would not be exposed.
- iv) That the study is beneficial as participants found to be positive with parasites and anemia would be treated at the hospital.

The committee therefore gave ethical clearance to your research project. You are required to note that the authorization to conduct the study has already expired and you will be required to apply for clearance if you plan to continue with the study or analysis beyond this phase.

Please further note that the Standard Operating Procedures (SOPs) requires that you submit a copy of the final report of your study to the Committee.

  
Prof. M. K. Limó  
**CHAIRMAN – RESEARCH ETHICS COMMITTEE**

c.c. DVC (R&E)  
Director Research  
MKL/pao

Egerton University is ISO 9001 : 2008 Certified

## APPENDIX E: PUBLICATIONS

**Hindawi Publishing Corporation**  
**Journal of Parasitology Research**  
**Volume 2014, Article ID 823923, 5 pages**  
**<http://dx.doi.org/10.1155/2014/823923>**

### *Research Article*

#### **1. Intestinal Helminth Infections in Pregnant Women Attending Antenatal Clinic at Kitale District Hospital, Kenya**

**A. W. Wekesa,<sup>1</sup> C. S. Mulambalah,<sup>2</sup> C. I. Muleke,<sup>3</sup> and R. Odhiambo<sup>4</sup>**

*1 Department of Biological Sciences, Faculty of Science, Egerton University, P.O. Box 536, Njoro 20107, Kenya*

*2 Department of Medical Microbiology and Parasitology, School of Medicine, College of Health Sciences, Moi University, P.O. Box 4606, Eldoret 30100, Kenya*

*3 Department of Veterinary Clinical Services, Faculty of Veterinary Medicine & Surgery, Egerton University, P.O. Box 536, Njoro 20107, Kenya*

*4 Department of Gender Studies, Egerton University, P.O. Box 536, Njoro 20107, Kenya*

Correspondence should be addressed to C. S. Mulambalah; [csmulambalah@gmail.com](mailto:csmulambalah@gmail.com)

Received 13 March 2014; Revised 4 May 2014; Accepted 5 May 2014; Published 27 May 2014

Academic Editor: C. Genchi

Copyright © 2014 A.W. Wekesa et al. This is an open access article distributed under the Creative Commons Attribution License, which permits unrestricted use, distribution, and reproduction in any medium, provided the original work is properly cited.

### **Abstract**

Intestinal helminth infections during pregnancy are associated with adverse outcomes including low birth weight and prenatal mortality. The infections are a major public health problem in developing countries. A hospital based survey was undertaken for six months to determine the infection prevalence, intensity, and risk factors. The study involved expectant women attending antenatal clinic. Stool samples were screened microscopically for helminth ova using Kato Katz technique. Information on risk factors was collected using semistructured questionnaire and analyzed using SPSS. Epidemiological data was analyzed using descriptive statistics and

multivariate analysis. The overall prevalence of infection was 21 (13.8%). Ascariasis was the most prevalent 10 (6.5%), hookworm infection was 6 (3.9%), and trichuriasis was 2 (1.3%). Pregnant women aged below 29 years (OR = 3.63, CI = 0.87– 11.75) and those with primary level of education (OR = 3.21, CI = 0.88–11.75) were at a higher risk of infection compared to those aged  $\geq$  29 years with secondary level of education. Hand washing was significantly associated with reduced likelihood of infection (OR = 0.18, 95% CI = 0.06–0.57). It was concluded that intestinal helminth infections were prevalent among pregnant women. We recommended that all expectant women visiting antenatal clinics be screened for intestinal helminth infections and positive cases be advised to seek treatment.

*International Journal of Current Microbiology And Applied Science* (2014) 3(10) 349-356  
ISSN: 2319-7706 Volume 3 Number 10 (2014) pp. 349-356  
<http://www.ijcmas.com>

## **Original Research Article**

### **2. Analysis of hookworm infection intensity and maternal haemoglobin levels**

**in women attending antenatal clinic at Kitale, Kenya**

**Wekesa Antony Wanyonyi<sup>1</sup>, Mulambalah Chrispinus Siteti<sup>2</sup>**

**Inyagwa Charles Muleke<sup>3</sup> and Orange Caleb Oburu<sup>4</sup>**

<sup>1</sup>Department of Biological Sciences, Faculty of Science, Egerton University, P.O. Box 536, Njoro 20107, Kenya.

<sup>2</sup>Department of Medical Microbiology and Parasitology, School of Medicine, College of Health Sciences, Moi University, P.O. Box 4606, Eldoret 30100, Kenya.

<sup>3</sup>Department of Veterinary Clinical Services, Faculty of Veterinary Medicine & Surgery, Egerton University, P.O. Box 536, Njoro 20107, Kenya

<sup>4</sup>Department of Veterinary Anatomy and Physiology, Faculty of Veterinary Medicine & Surgery, Egerton University, P.O. Box 536, Njoro 20107, Kenya.

## **A b s t r a c t**

It is well-established that human hookworm infection results in intestinal blood loss which, in turn, can contribute to low haemoglobin levels especially in pregnant women. One third of all pregnant women in developing countries are infected with low haemoglobin level is a common public health problem in many developing countries and is mainly attributed to parasitic intestinal helminth infections. The parasite species involved and host-parasite outcomes have not

been adequately studied in different specific population segments in Kenya. A six month hospital based study to assess the association between hookworm infection, spatial variation in intensity of infection and maternal haemoglobin levels was undertaken at a district hospital. A total of 153 pregnant women who consented participate were enrolled in the study. Data was analyzed using SPSS windows version 16.0. Chi-square was used to determine the association of *Necator americanus* infection and maternal haemoglobin level.

21(13.8%) out of 153, had intestinal helminth infections. *Ascaris lumbricoides* was 10 (6.5%) *Necator americanus* 6 (3.9%). *Trichuris trichiura* 2 (1.3%). A significant negative association was observed between heavy infection of *Necator americanus* and maternal low haemoglobin level (P-value 0.13). We concluded that heavy intensities of *Necator americanus* are associated with low haemoglobin levels in pregnant women. It is recommended that all women of child bearing age living in hookworm endemic areas be subject to periodic antihelminthic treatment and incorporation of de-worming in antenatal care programs.